

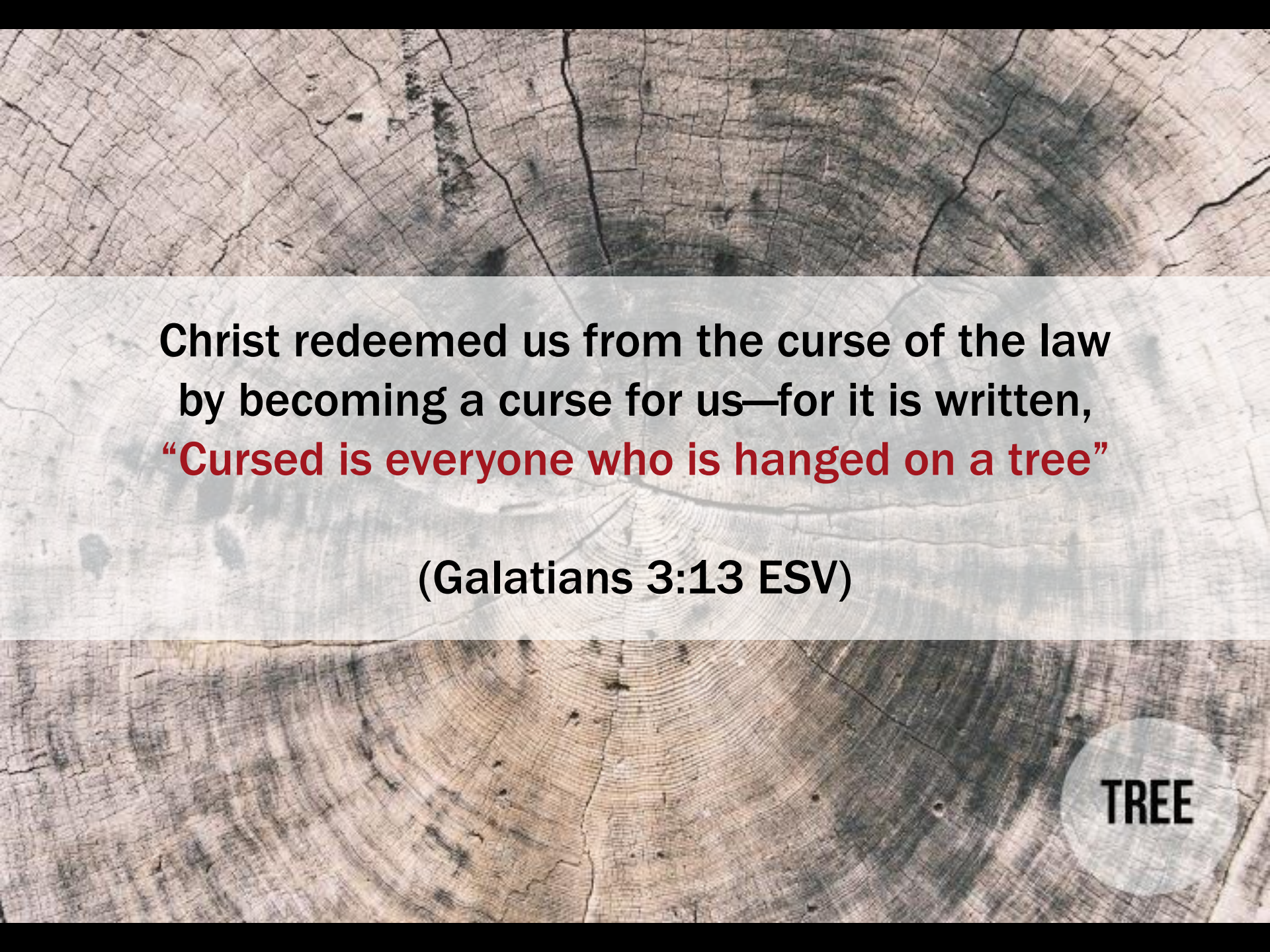
# PASSION WEEK

FROM THE TABLE TO THE TOMB





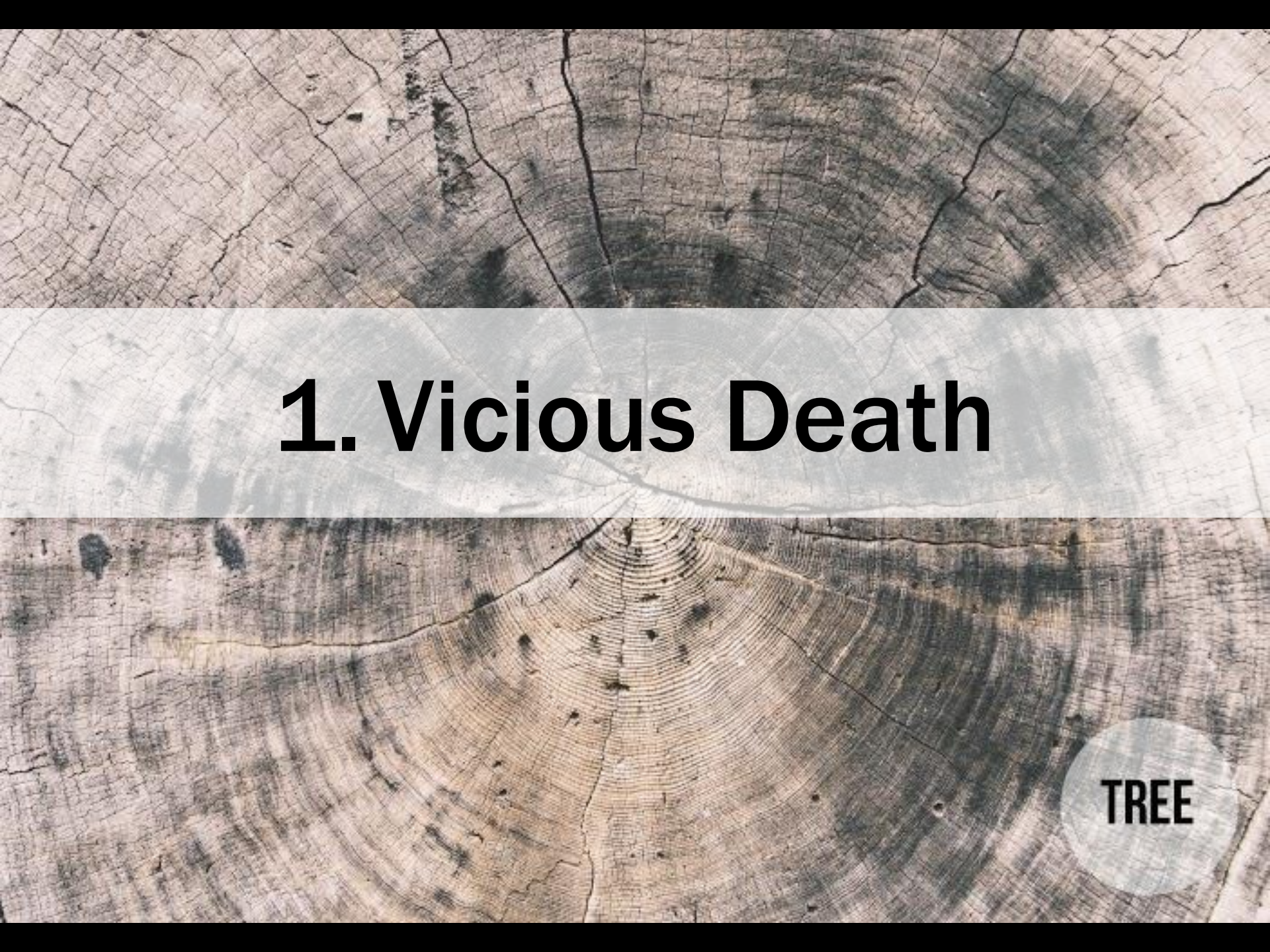


The background is a close-up photograph of a tree trunk's cross-section, showing concentric growth rings and a network of cracks. A semi-transparent, light-colored rectangular box is centered over the image, containing text. The text is in a bold, sans-serif font. The first part is black, and the second part is red. The word "TREE" is written in black, bold, sans-serif font inside a light blue circular shape in the bottom right corner.

**Christ redeemed us from the curse of the law  
by becoming a curse for us—for it is written,  
“Cursed is everyone who is hanged on a tree”**

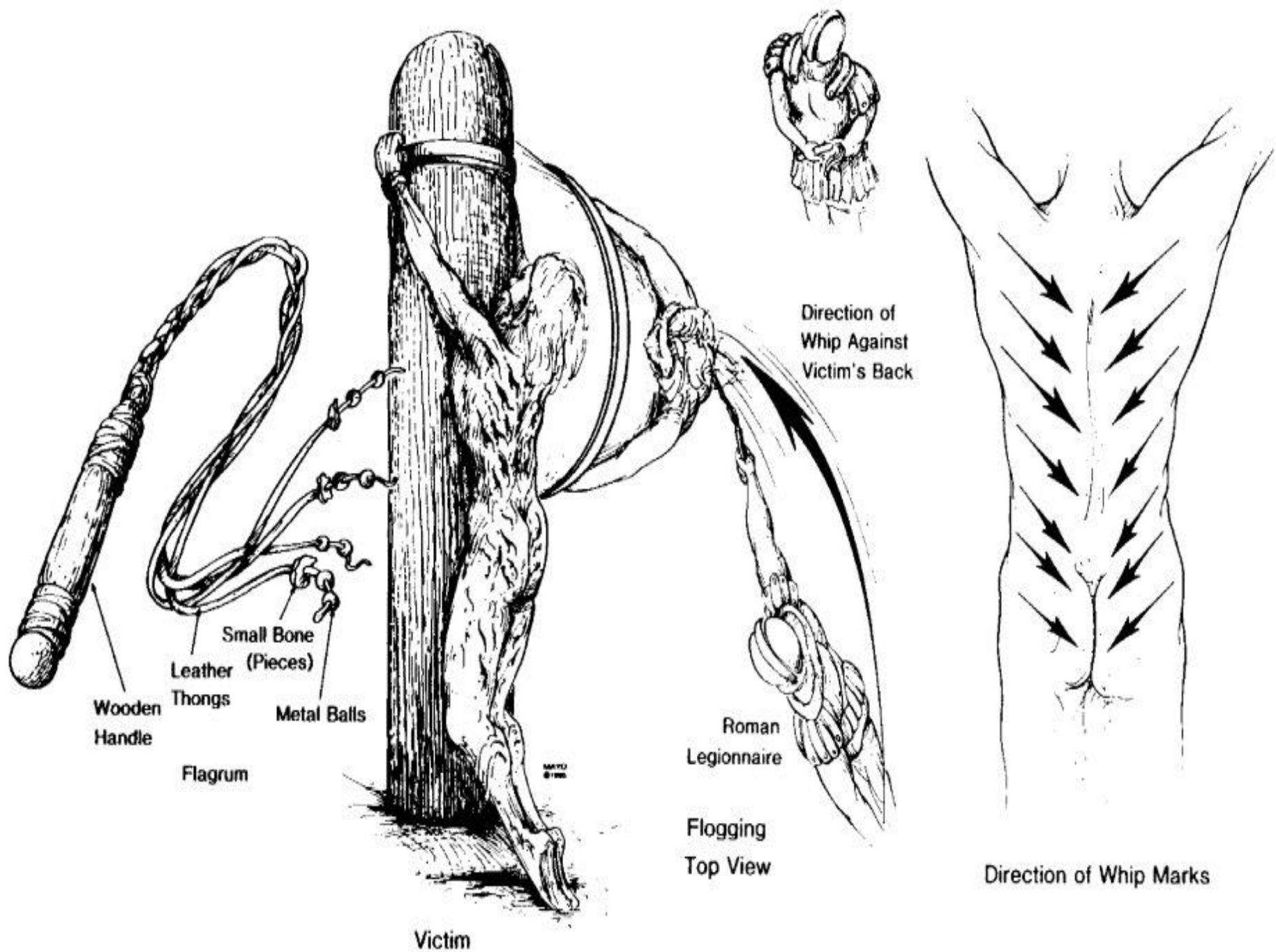
**(Galatians 3:13 ESV)**

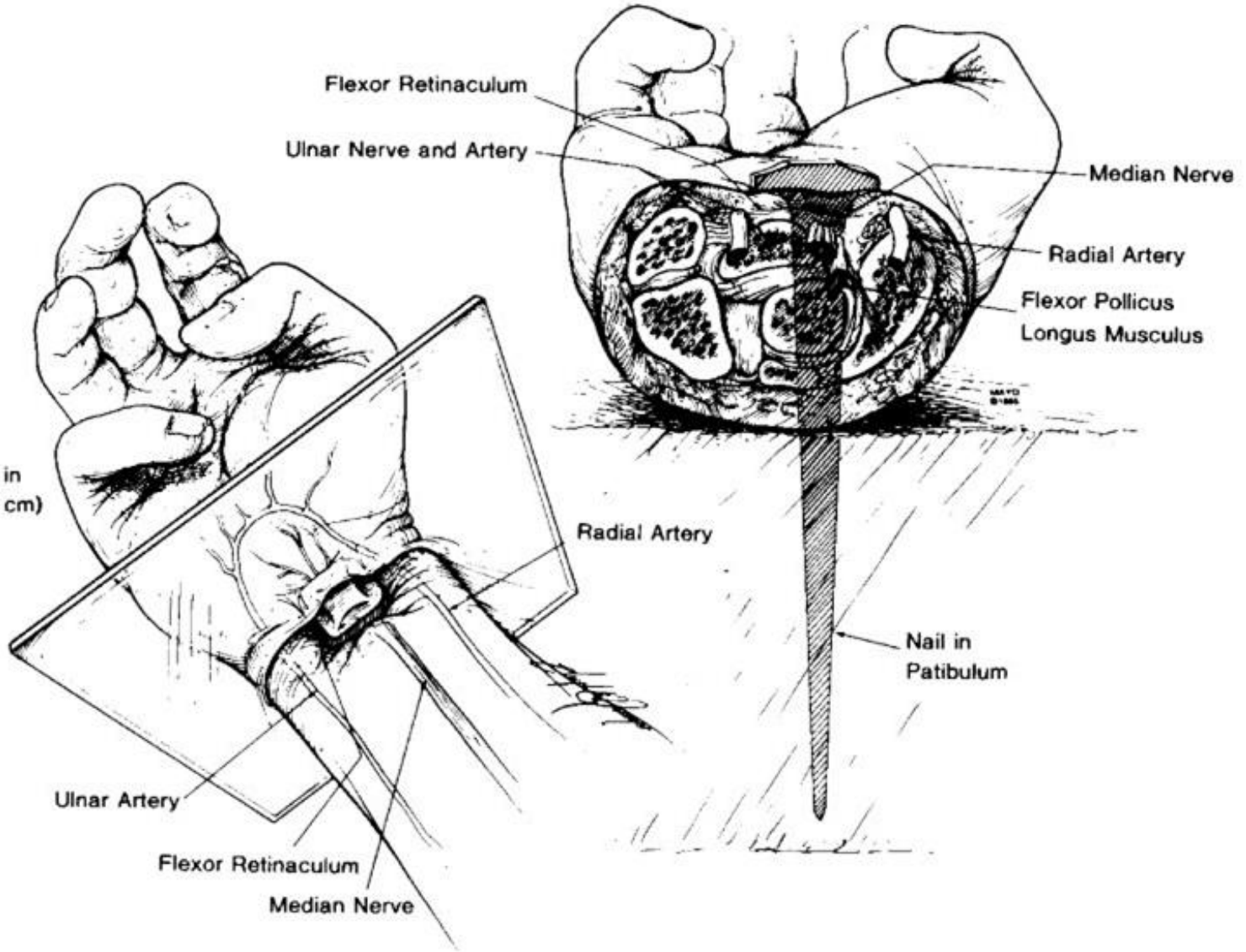
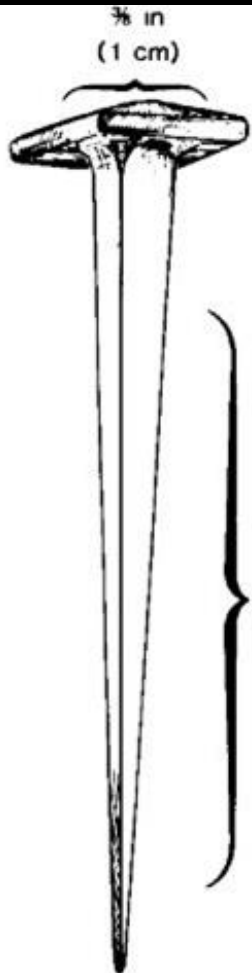
**TREE**



# 1. Vicious Death

TREE





Flexor Retinaculum

Ulnar Nerve and Artery

Median Nerve

Radial Artery

Flexor Pollicis Longus Musculus

Radial Artery

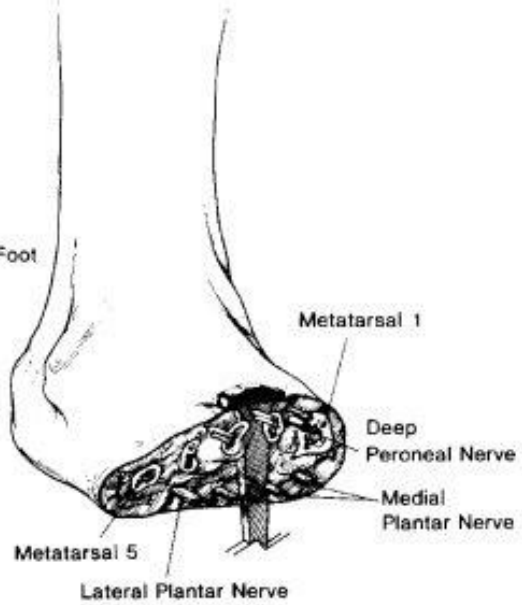
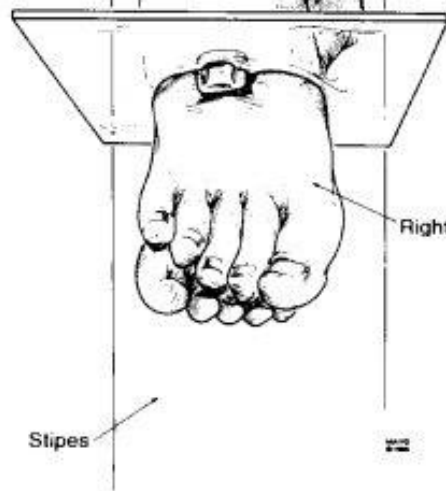
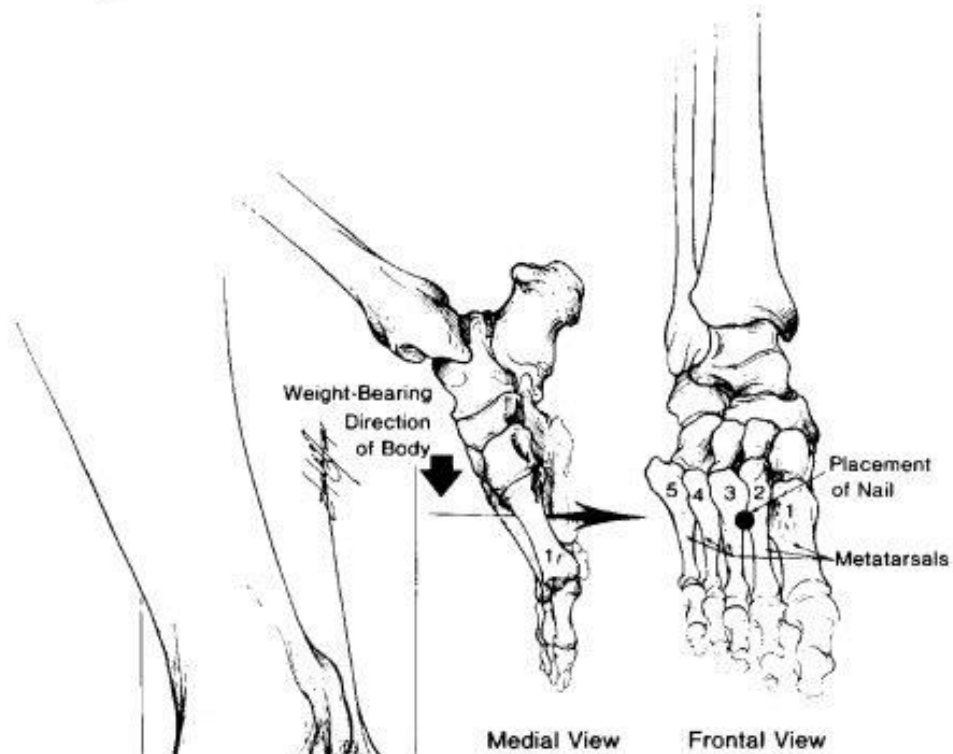
Nail in Patibulum

5 to 7 in  
(13 to 18 cm)

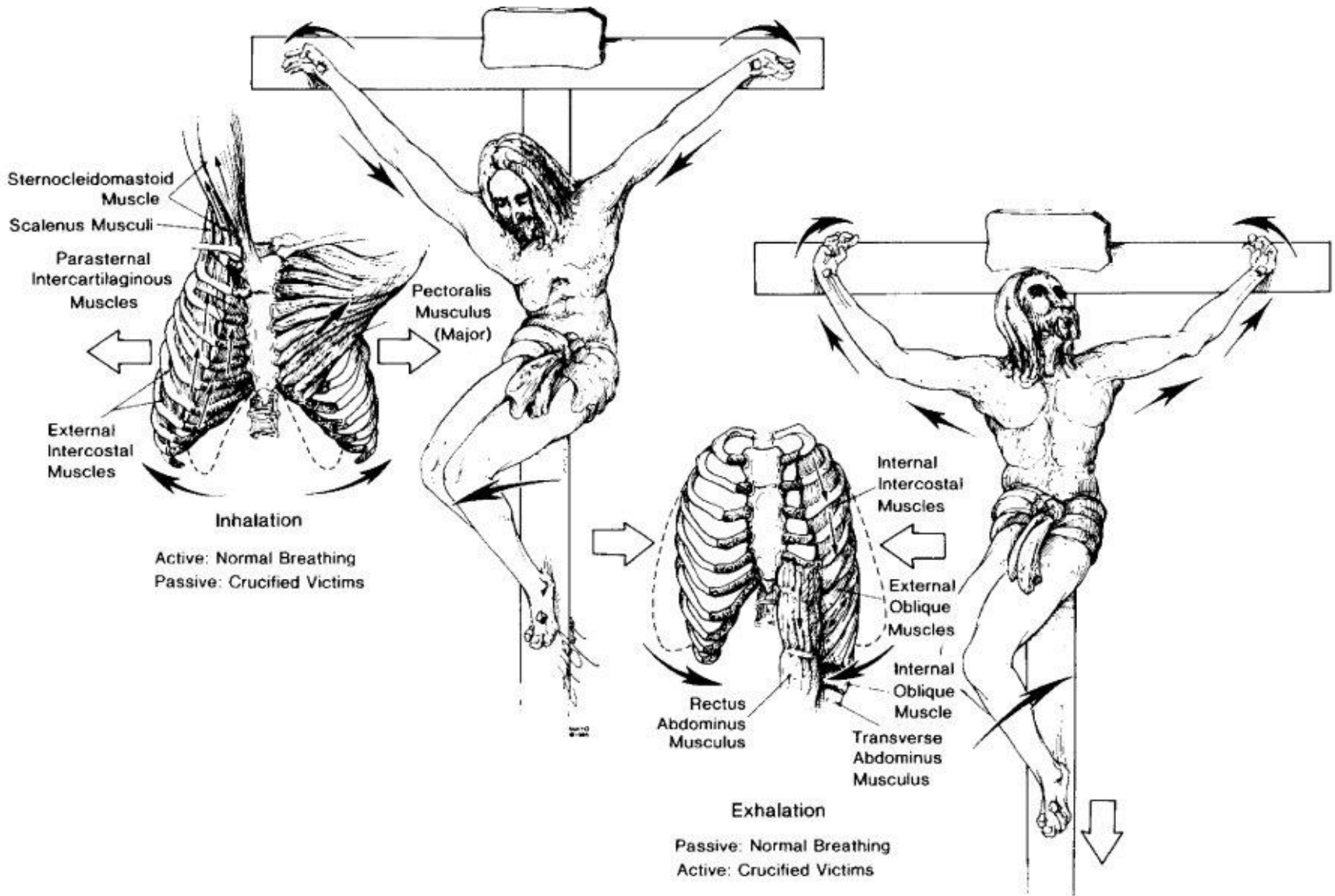
Ulnar Artery

Flexor Retinaculum

Median Nerve







# Psa 22:14

I am poured out like water, and all my bones are out of joint: my heart is like wax; it is melted in the midst of my bowels.

# **Psa 22:16**

**For dogs have compassed me: the assembly  
of the wicked have inclosed me: they  
pierced my hands and my feet.**

# **Psa 22:17**

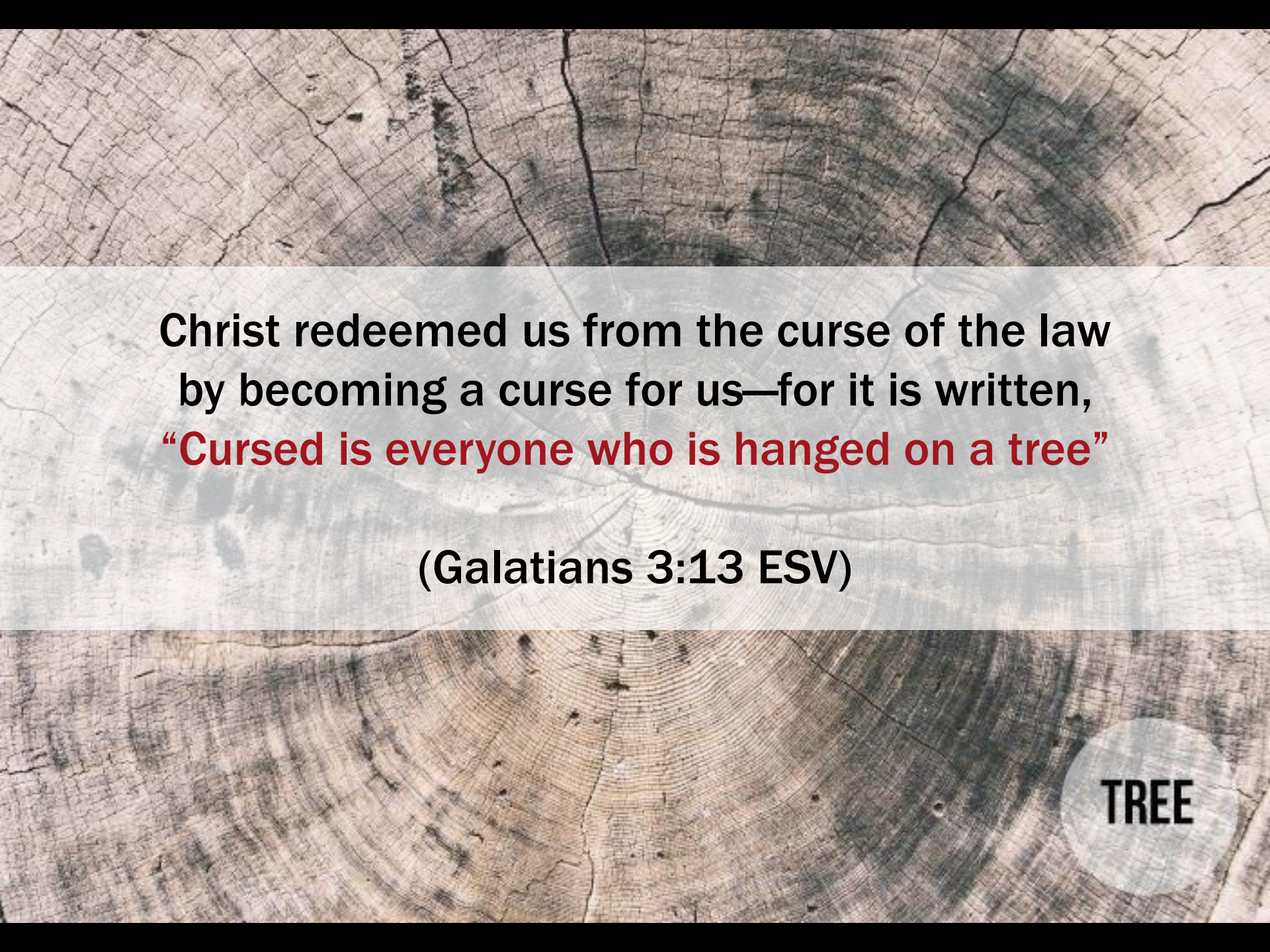
**I may tell all my bones: they look and stare upon me.**

# **Psa 129:3**

**The plowers plowed upon my back;  
they made long their furrows.**

# Mat 27:45-46

Now from the sixth hour there was darkness over all the land until the ninth hour. And about the ninth hour Jesus cried out with a loud voice, saying, “Eli, Eli, lema sabachthani?” that is, **“My God, my God, why have you forsaken me?”**

The background is a close-up photograph of a tree trunk's cross-section, showing concentric growth rings and a network of cracks. A semi-transparent white rectangular box is centered over the image, containing text. The text is in a bold, sans-serif font. The phrase "Cursed is everyone who is hanged on a tree" is highlighted in red, while the rest of the text is black.

Christ redeemed us from the curse of the law  
by becoming a curse for us—for it is written,  
**“Cursed is everyone who is hanged on a tree”**

**(Galatians 3:13 ESV)**

**TREE**



# 1. Vicious Death

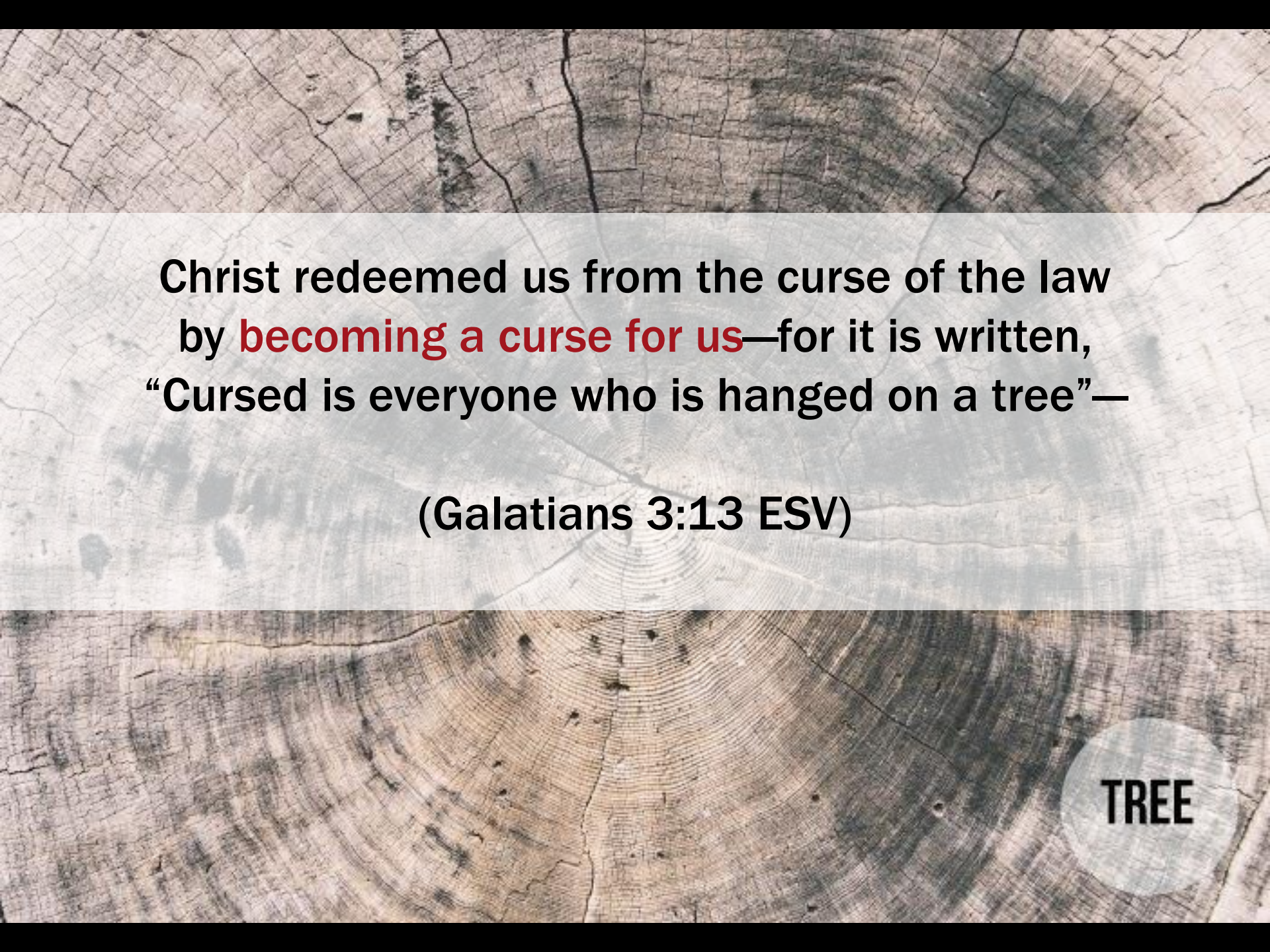
TREE





# 2. Vicarious Death

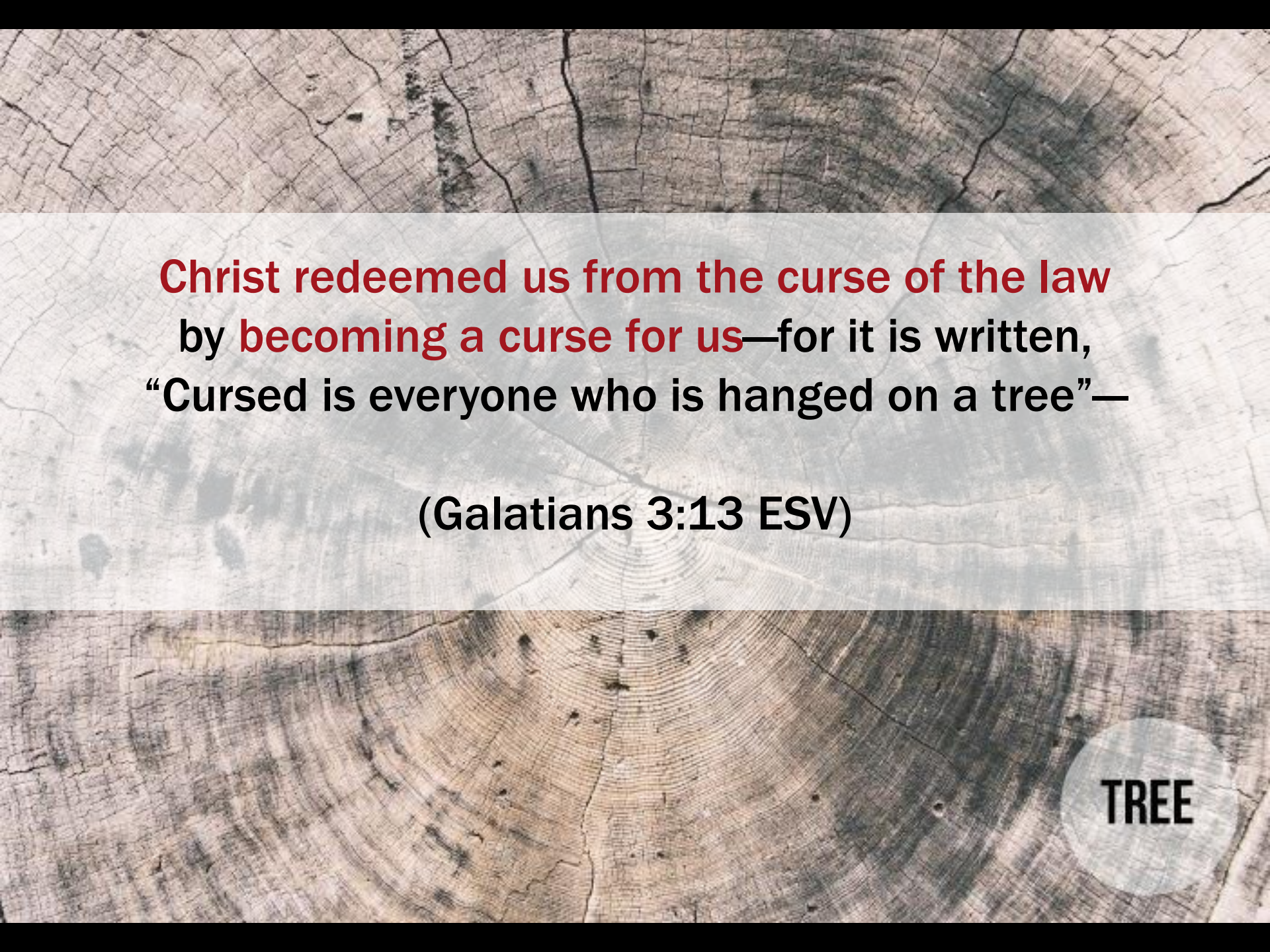
TREE

The background is a close-up photograph of a tree trunk cut in half, showing the concentric growth rings of the wood. The wood has a natural, weathered appearance with various shades of brown and tan. A semi-transparent, light-colored rectangular box is overlaid on the center of the image, containing the main text.

Christ redeemed us from the curse of the law  
by **becoming a curse for us**—for it is written,  
“Cursed is everyone who is hanged on a tree”—

(Galatians 3:13 ESV)

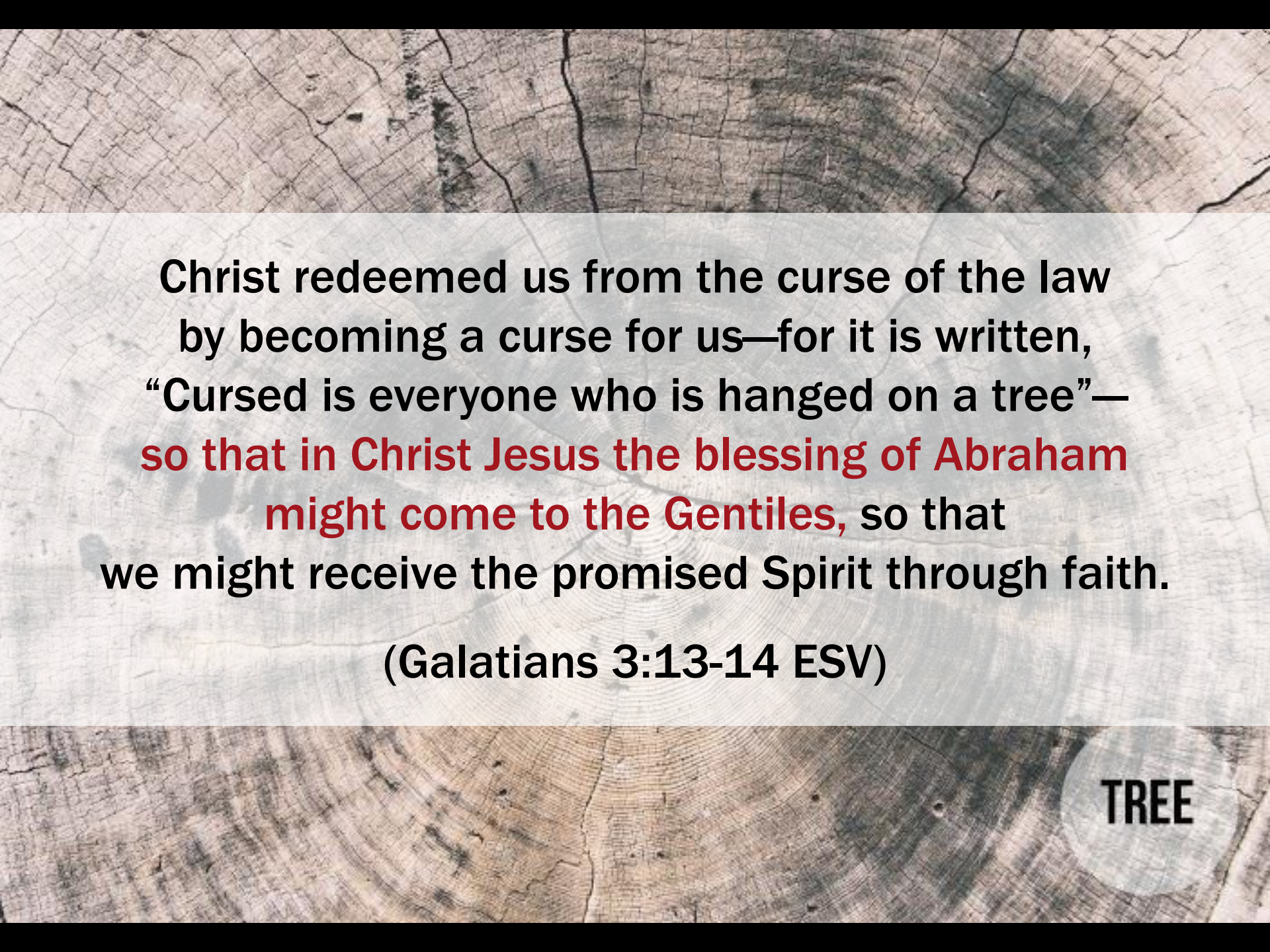
TREE



**Christ redeemed us from the curse of the law  
by becoming a curse for us—for it is written,  
“Cursed is everyone who is hanged on a tree”—**

**(Galatians 3:13 ESV)**

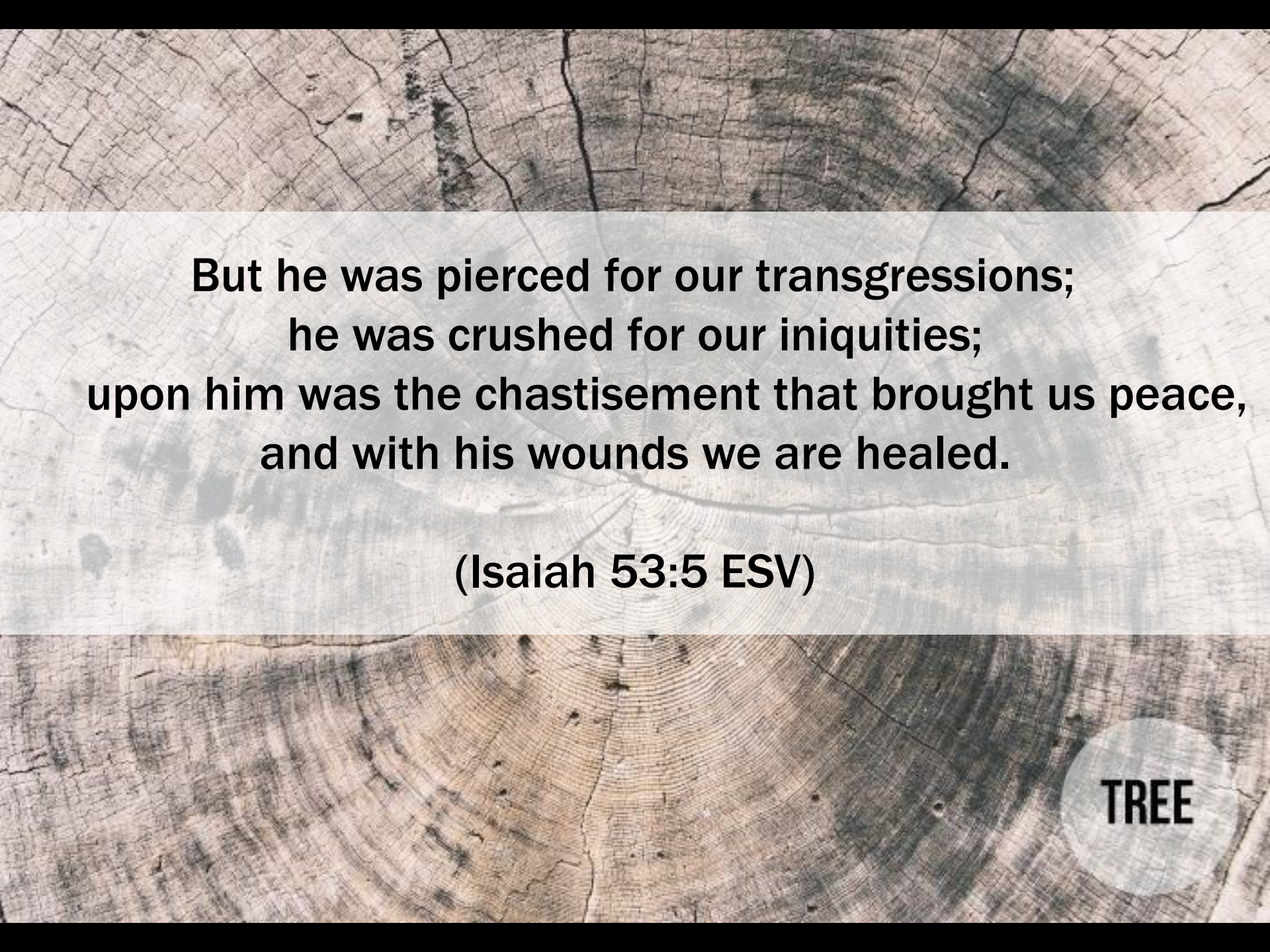
**TREE**

The background is a close-up photograph of a tree trunk's cross-section, showing the concentric growth rings and the rough, cracked texture of the bark. A semi-transparent white rectangular box is centered over the image, containing the text. The text is in a bold, sans-serif font. The words "Christ Jesus the blessing of Abraham" and "might come to the Gentiles" are highlighted in a dark red color, while the rest of the text is black.

**Christ redeemed us from the curse of the law  
by becoming a curse for us—for it is written,  
“Cursed is everyone who is hanged on a tree”—  
so that in Christ Jesus the blessing of Abraham  
might come to the Gentiles, so that  
we might receive the promised Spirit through faith.**

**(Galatians 3:13-14 ESV)**

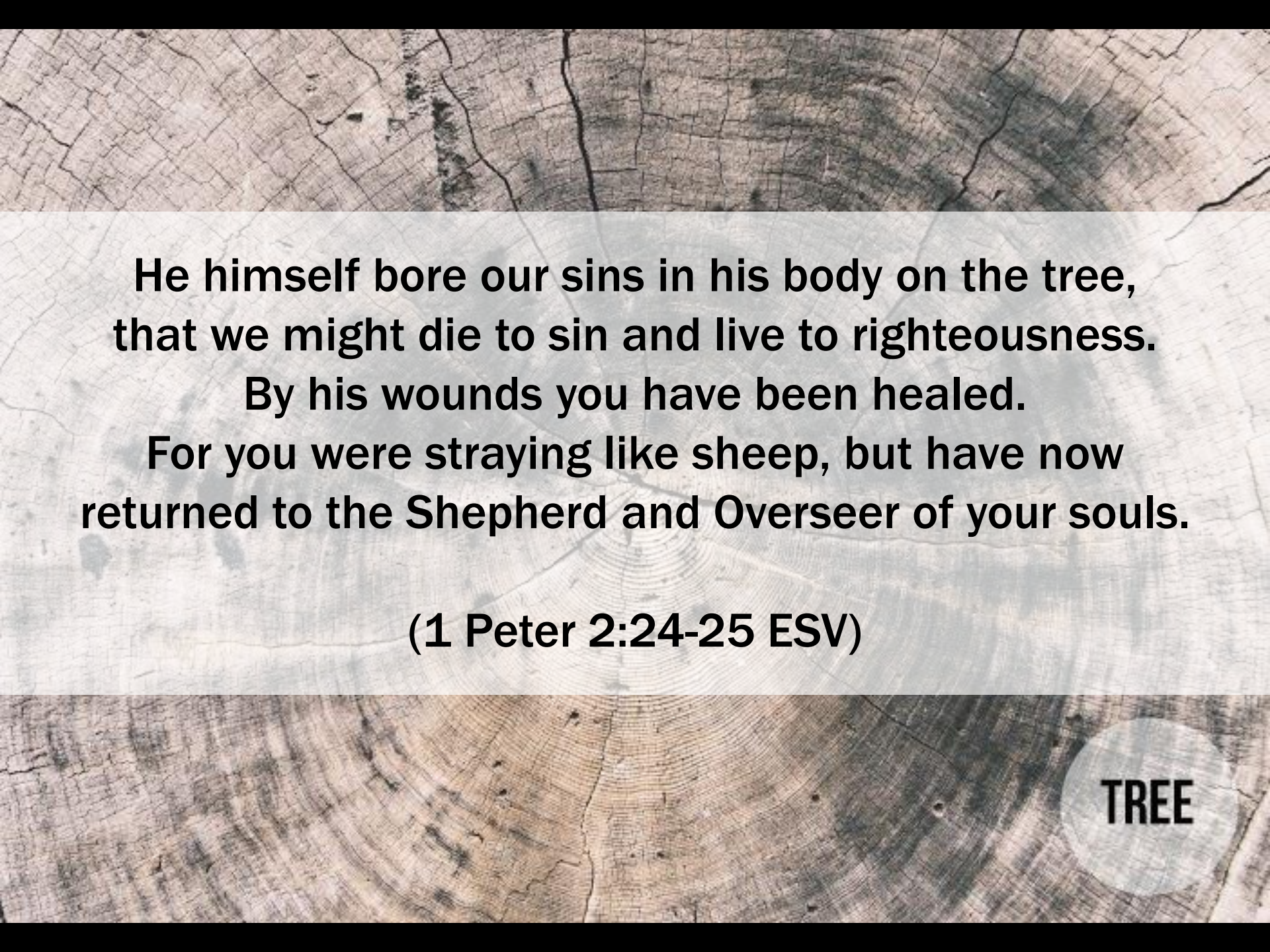
**TREE**



**But he was pierced for our transgressions;  
he was crushed for our iniquities;  
upon him was the chastisement that brought us peace,  
and with his wounds we are healed.**

**(Isaiah 53:5 ESV)**

**TREE**



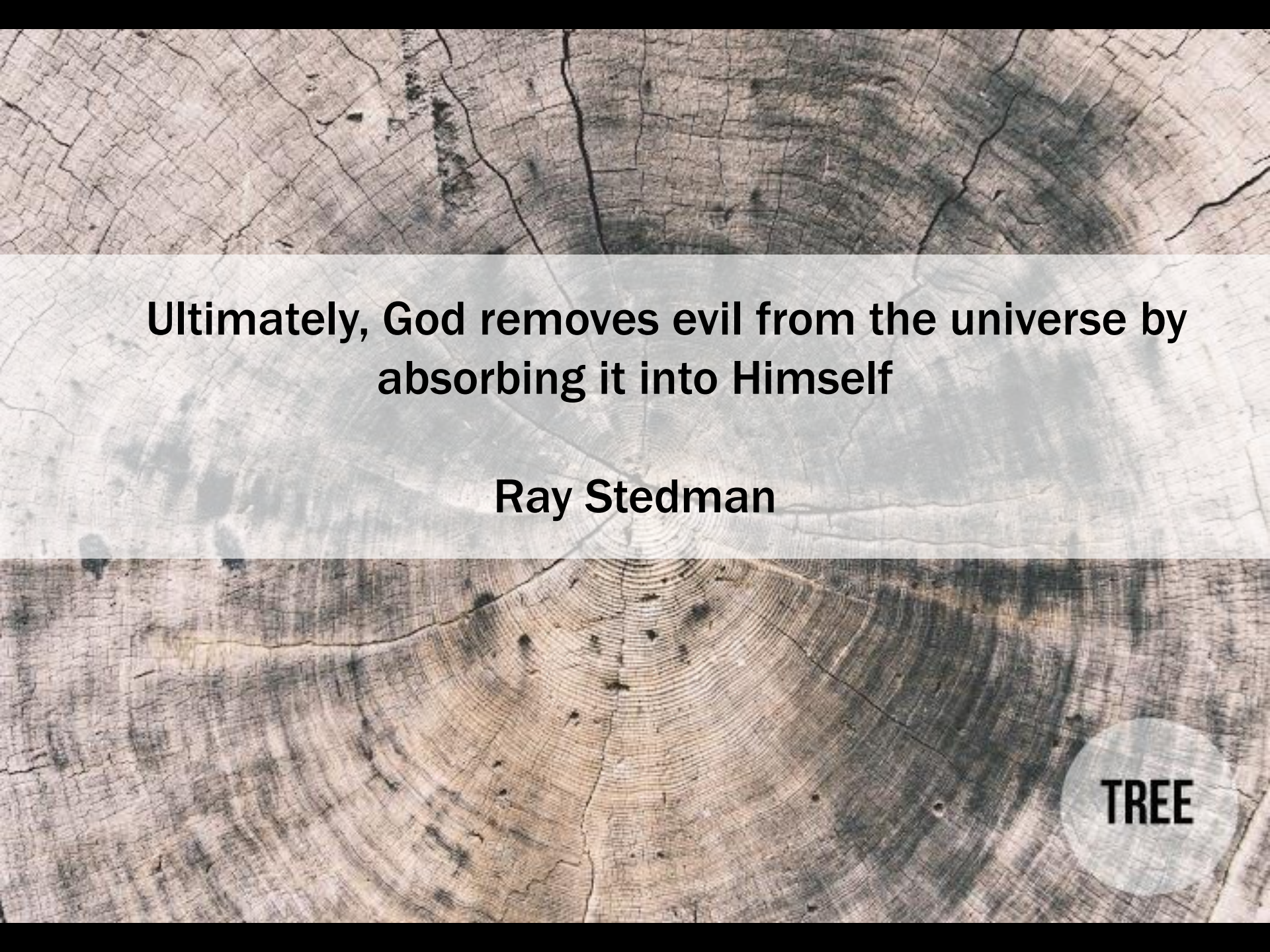
**He himself bore our sins in his body on the tree,  
that we might die to sin and live to righteousness.**

**By his wounds you have been healed.**

**For you were straying like sheep, but have now  
returned to the Shepherd and Overseer of your souls.**

**(1 Peter 2:24-25 ESV)**

**TREE**



**Ultimately, God removes evil from the universe by  
absorbing it into Himself**

**Ray Stedman**

**TREE**



# 1. Vicious Death

TREE





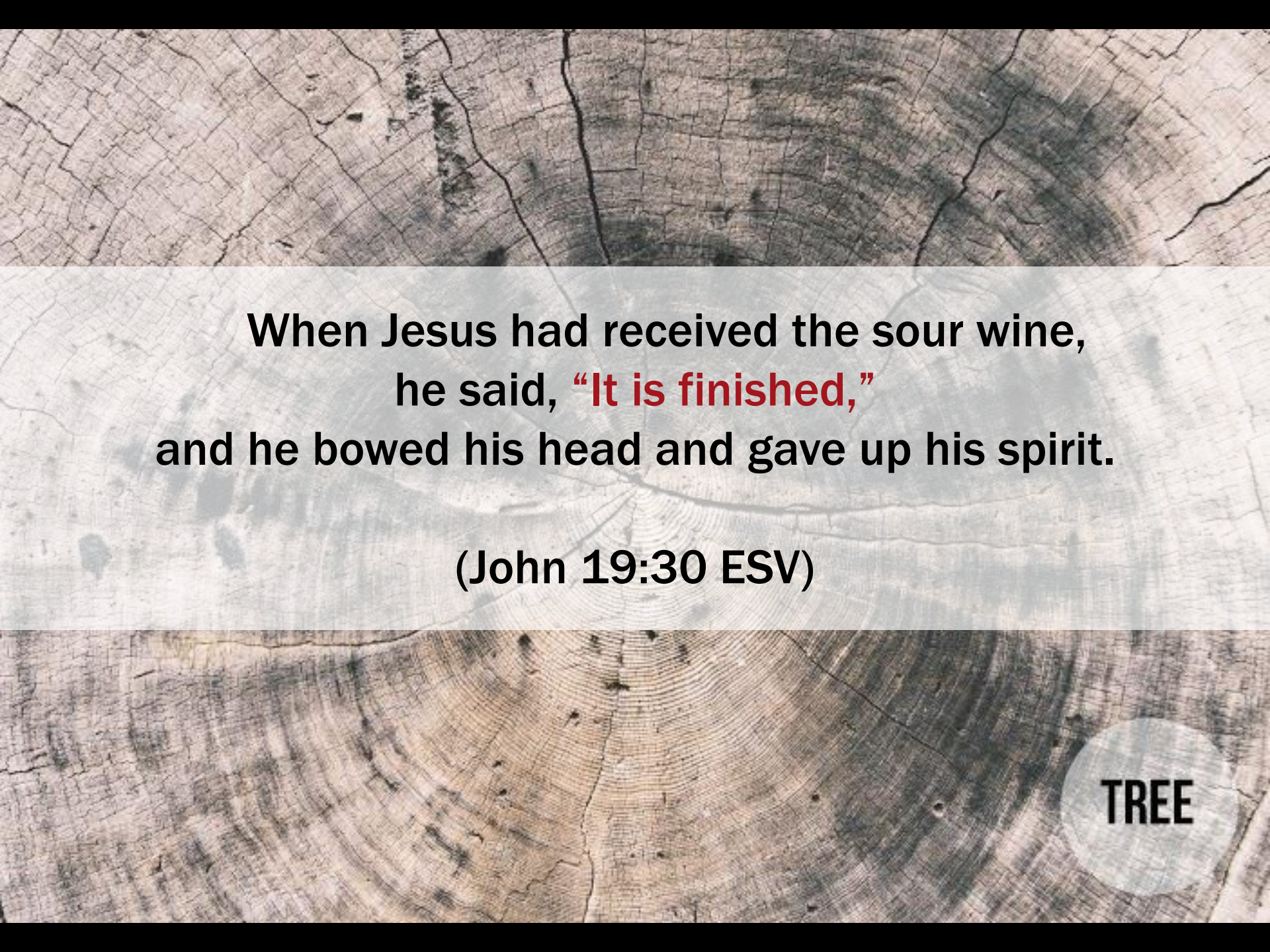
# 2. Vicarious Death

TREE



# 3. Victorious Death

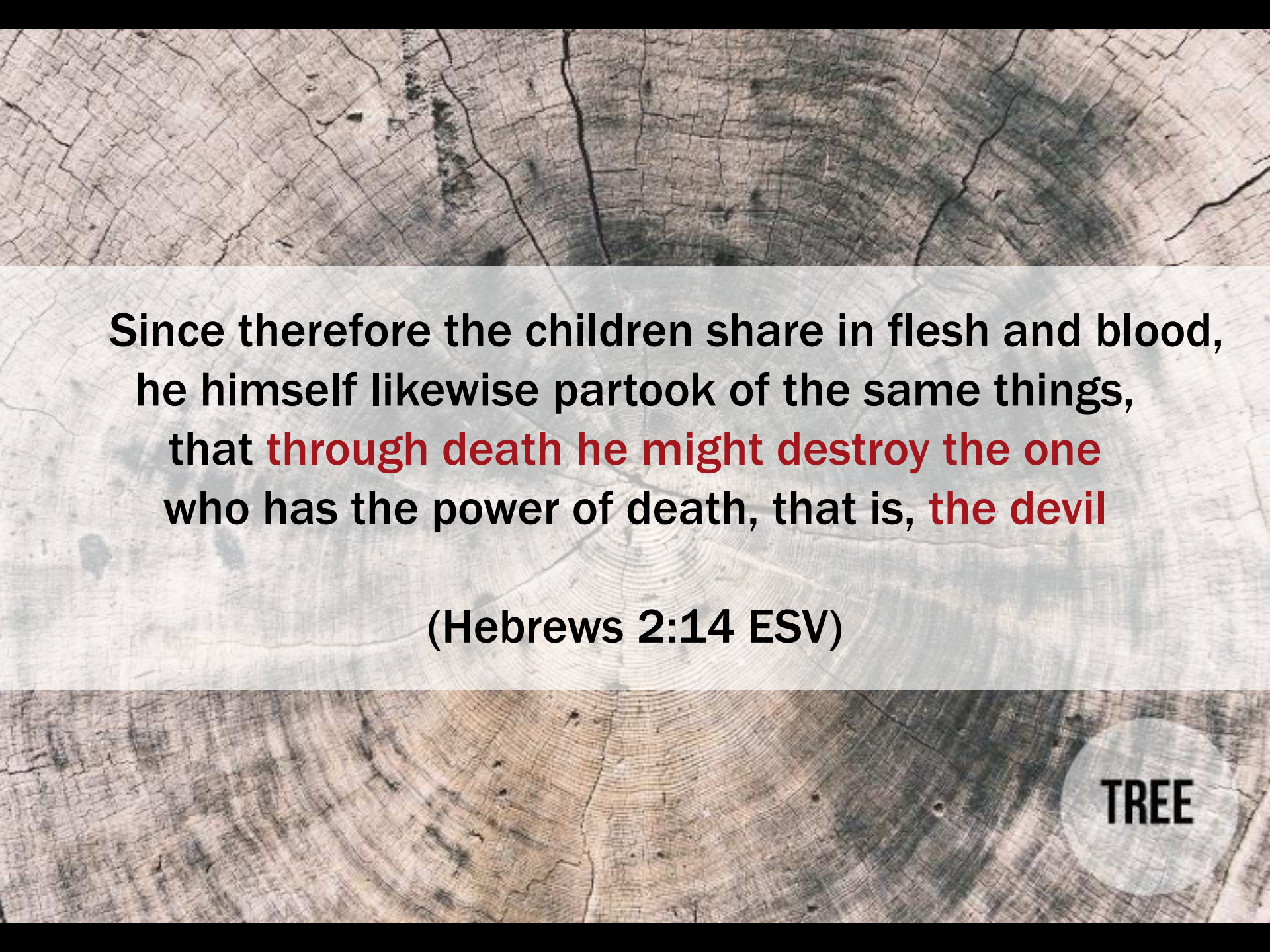
TREE



When Jesus had received the sour wine,  
he said, **“It is finished,”**  
and he bowed his head and gave up his spirit.

(John 19:30 ESV)

TREE



Since therefore the children share in flesh and blood,  
he himself likewise partook of the same things,  
that **through death he might destroy the one**  
who has the power of death, that is, **the devil**

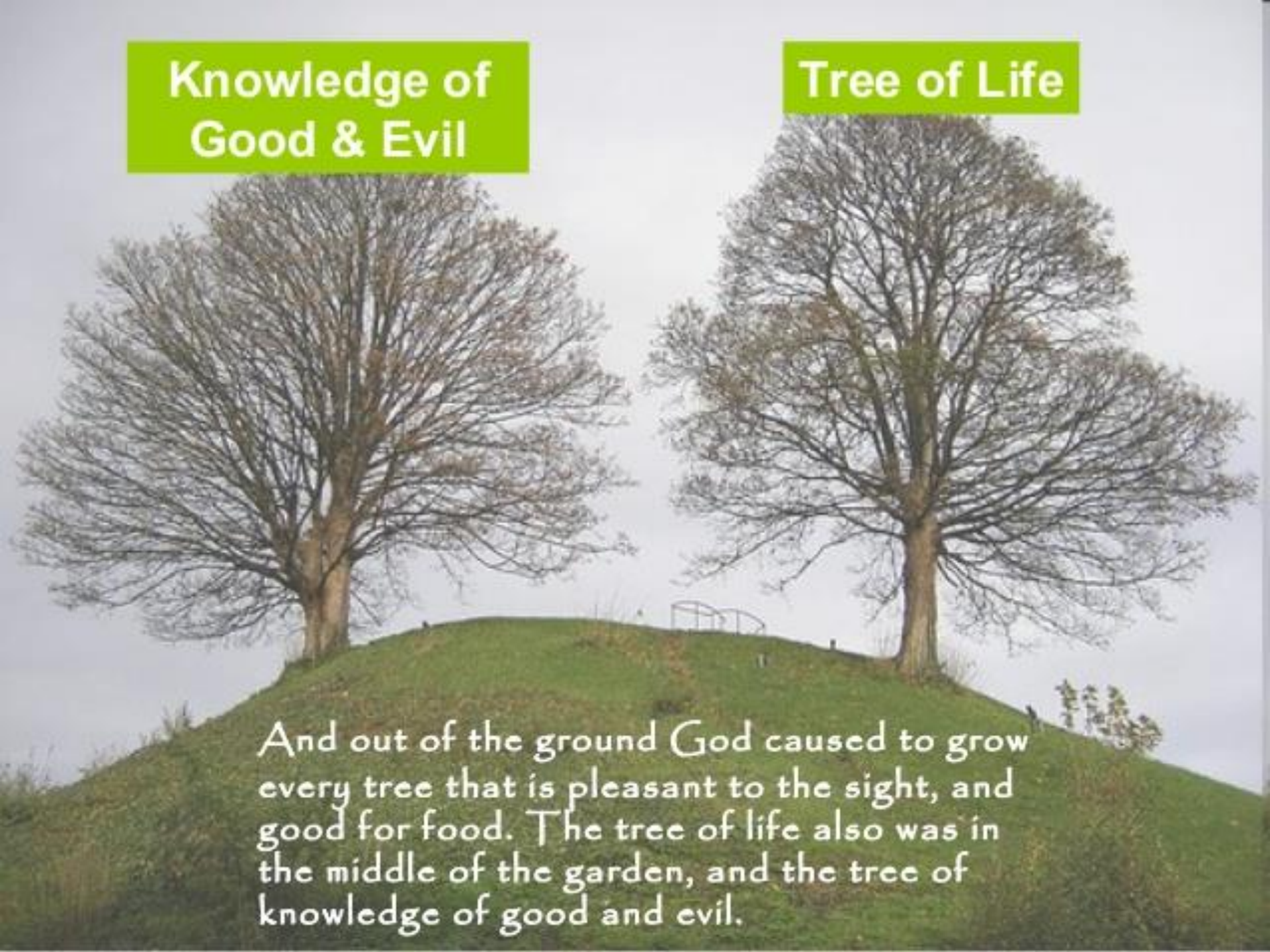
(Hebrews 2:14 ESV)

TREE



Knowledge of  
Good & Evil

Tree of Life

A photograph of two large, leafless trees standing on a grassy hill. The trees are positioned on either side of the center, with their trunks and intricate branch structures clearly visible against a pale, overcast sky. The hill they sit on is covered in green grass and has a small metal structure visible in the background between the trees.

And out of the ground God caused to grow every tree that is pleasant to the sight, and good for food. The tree of life also was in the middle of the garden, and the tree of knowledge of good and evil.

And out of the ground the LORD God made to spring up every tree that is pleasant to the sight and good for food. **The tree of life** was in the midst of the garden, and the **tree of the knowledge of good and evil**.

(Genesis 2:9 ESV)

And the LORD God commanded the man, saying,  
“You may surely eat of every tree of the garden, but  
of the **tree of the knowledge of good and evil** you  
shall not eat, for in the day that you eat of it you  
shall surely die.”

(Genesis 2:16-17 ESV)



Then the angel showed me the river of the water of life, bright as crystal, flowing from the throne of God and of the Lamb through the middle of the street of the city; also, on either side of the river, **the tree of life** with its twelve kinds of fruit, yielding its fruit each month. The leaves of the tree were for the healing of the nations.

(Revelation 22:1-2 ESV)

Blessed are those who wash their robes, so that they may have the right to **the tree of life** and that they may enter the city by the gates.

(Revelation 22:14 ESV)

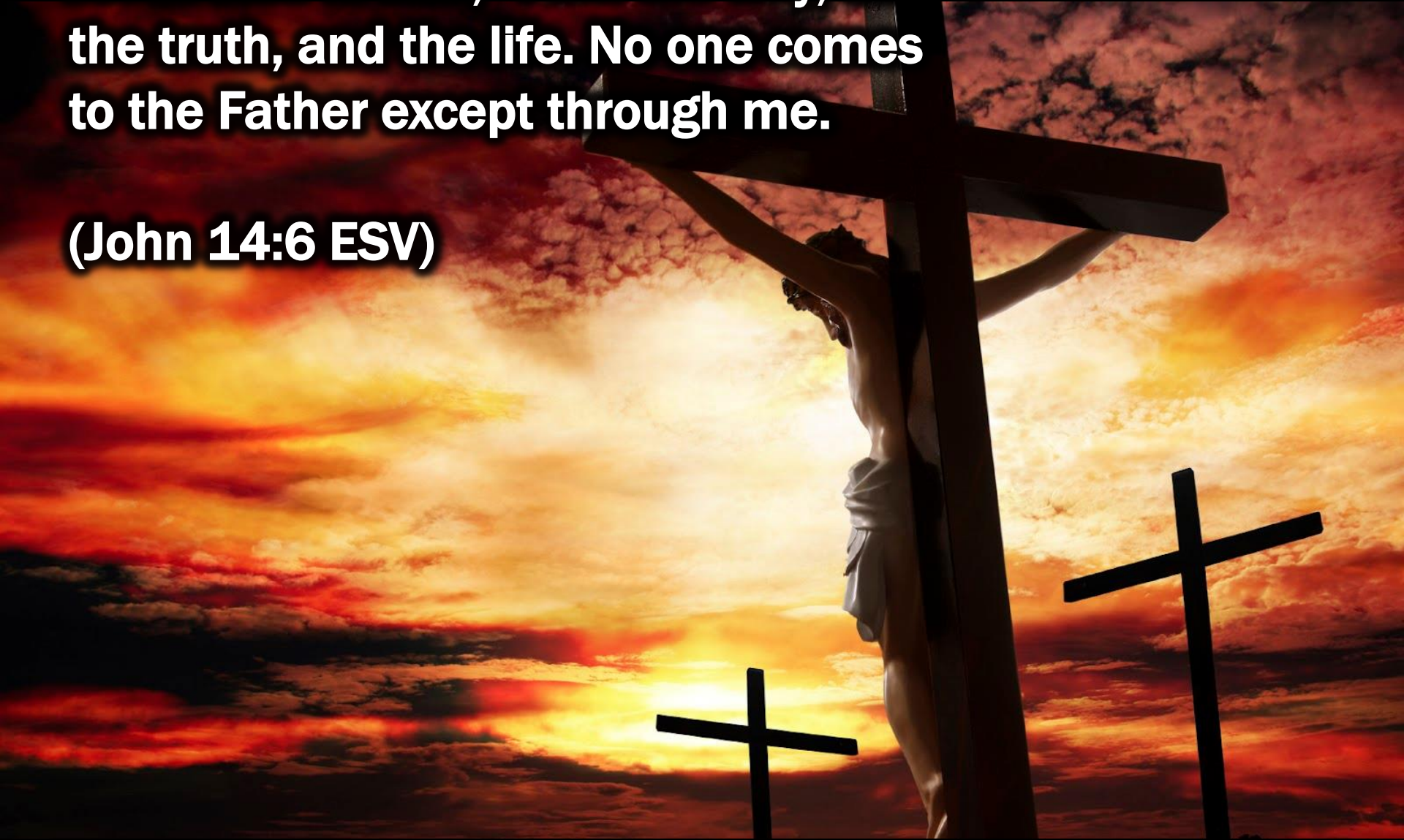
He who has an ear, let him hear what the Spirit says to the churches. To the one who conquers I will grant to eat of **the tree of life**, which is in the paradise of God.'

(Revelation 2:7 ESV)



**Jesus said to him, “I am the way, and the truth, and the life. No one comes to the Father except through me.**

**(John 14:6 ESV)**



**... if you confess with your mouth  
that Jesus is Lord and believe in your  
heart that God raised him from the  
dead, you will be saved.**

**(Romans 10:9 ESV)**

