

TWO **Ways** 2 **To** Live



Video

TWO **Ways** 2 TO **Live**



Pilgrim's Progress



John Bunyan











For the gate is narrow and the way is hard that leads to life, and those who find it are few. (Mat 7:14 ESV)



Enter by the narrow gate. **For the gate is wide and the way is easy that leads to destruction, and those who enter by it are many.**

For the gate is narrow and the way is hard that leads to life, and those who find it are few. (Mat 7:13,14 ESV)



Easy Way



Easy Way

Broad Gate



Easy Way

Broad Gate

Many



Easy Way

Broad Gate

Many

Destruction



Easy Way

Broad Gate

Accommodating

Many

Destruction



Easy Way

Broad Gate

Many

Destruction

No safety in numbers!



Easy Way

Broad Gate

Many

Destruction

Eternal torment



Hard Way



Hard Way

Narrow Gate



Hard Way

Narrow Gate

Few



Hard Way

Narrow Gate

Few

Life



WAYS

Hard Way

Restrictive access

Narrow Gate

Few

Life

LIVE



Hard Way

Narrow Gate

Most do not enter

Few

Life



WAYS

Hard Way

Narrow Gate

Few

Bliss with God

Life

LIVE



Easy Way

Broad Gate

Many

Destruction

Hard Way

Narrow Gate

Few

Life



Enter by the narrow gate. *For the gate is wide and the way is easy that leads to destruction, and those who enter by it are many.*

For the gate is narrow and the way is hard that leads to life, and those who find it are few. (Mat 7:13,14 ESV)



Enter by the narrow gate. For the gate is wide and the way is easy that leads to destruction, and those who enter by it are many.

For the gate is narrow and the way is hard that leads to life, and those who find it are few. (Mat 7:13,14 ESV)



Enter by the narrow gate.

1. Leave the Easy Way



Enter by the narrow gate.

1. *Leave the Easy Way*



Enter by the narrow gate.

2. Look for the Narrow Gate



Enter by the narrow gate.

2. Look for the Narrow Gate

For our sake he made him to be sin who knew no sin, so that in him we might become the **righteousness of God.**
(2Co 5:21)



Enter by the narrow gate.

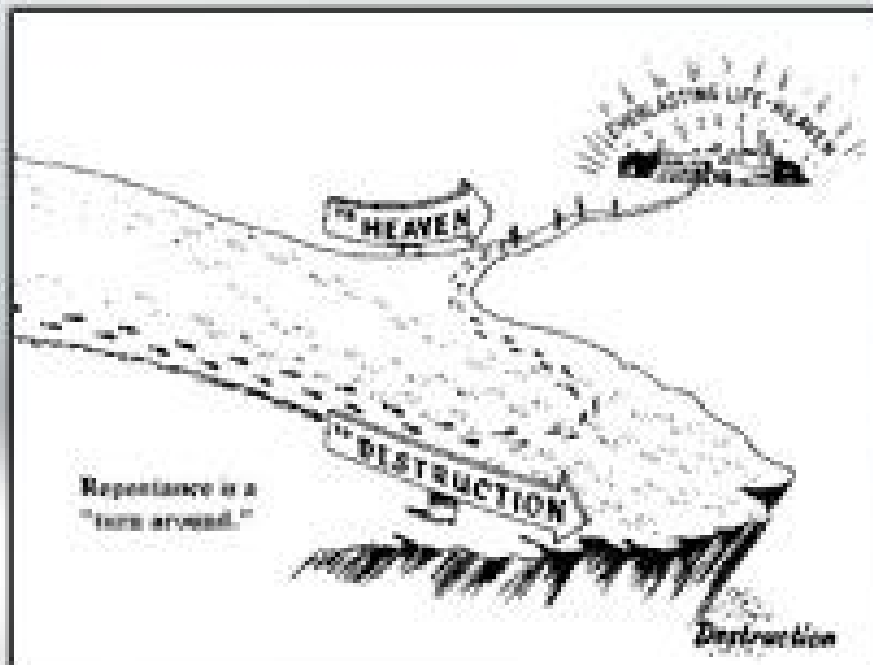
2. Look for the Narrow Gate

... and be found in him, not having a righteousness of my own that comes from the law, but that which comes through faith in Christ, the righteousness from God that depends on faith (Phi 3:9)



Enter by the narrow gate.

2. Look for the Narrow Gate



Enter by the narrow gate.

3. Enter the Narrow Gate



Enter by the narrow gate.

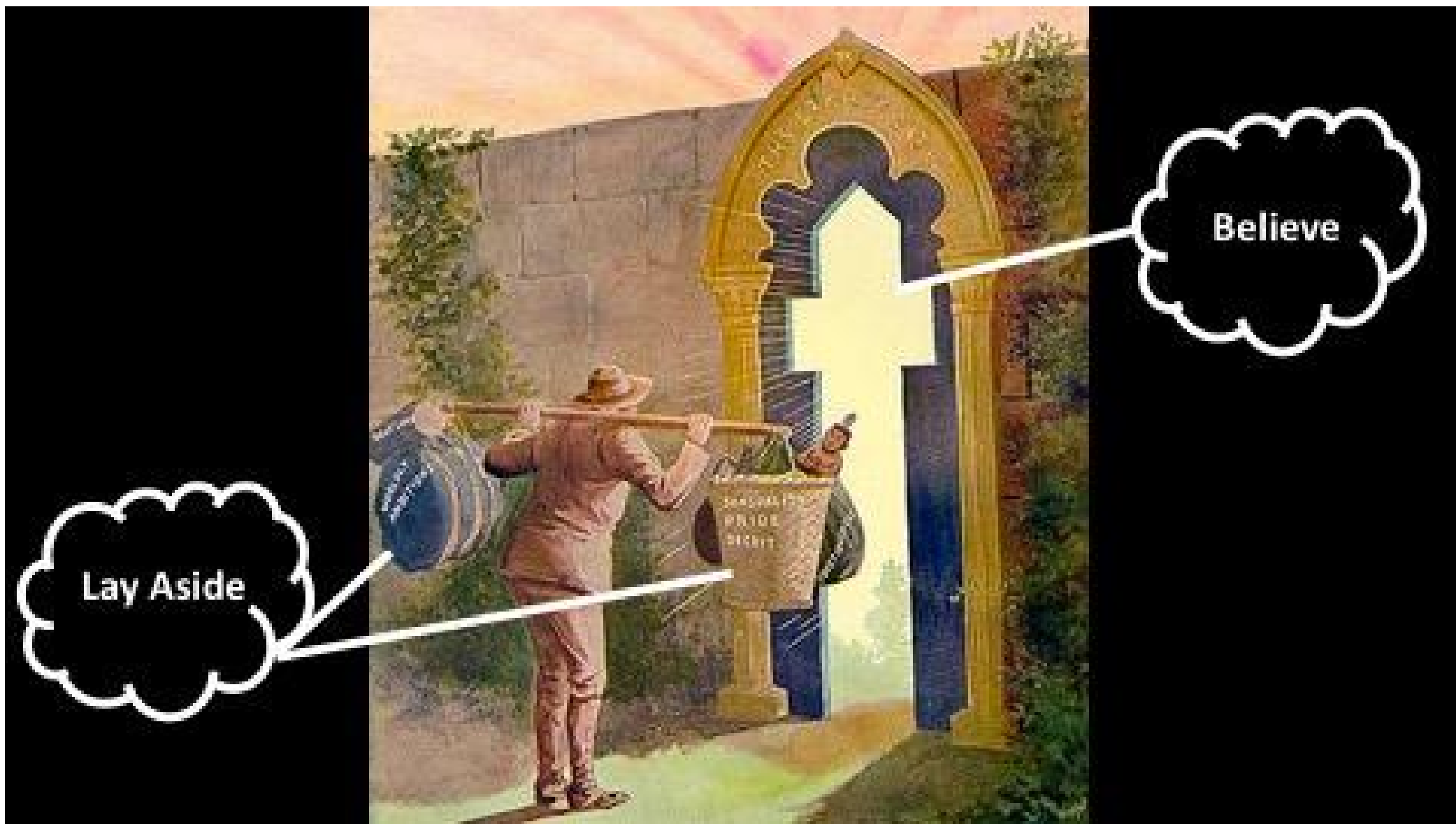
3. Enter the Narrow Gate







Lay Aside



Lay Aside

Believe

Enter by the narrow gate. For the gate is wide and the way is easy that leads to destruction, and those who enter by it are many.

For the gate is narrow and the way is hard that leads to life, and those who find it are few. (Mat 7:13,14 ESV)



Enter by the narrow gate. For the gate is wide and the way is easy that leads to destruction, and those who enter by it are many.

For the gate is narrow and the **way is hard** that leads to life, and those who find it are few. (Mat 7:13,14 ESV)



A 3D rendered figure of a man in a light grey suit is walking from left to right across a white, curved surface. The surface is covered with numerous black arrows pointing in various directions. The background is a dark blue gradient with several faint, larger arrows pointing downwards and outwards. The overall scene is a metaphor for facing challenges and tribulations.

STRENGTHENING THE SOULS OF
THE DISCIPLES, ENCOURAGING THEM TO
CONTINUE IN THE FAITH, AND SAYING THAT

**THROUGH MANY
TRIBULATIONS WE MUST
ENTER THE KINGDOM OF GOD.**

----- ACTS 14:22

Faithlife

Matthew 24:13

But the one who endures to
the end will be saved.

FOR WE HAVE COME TO

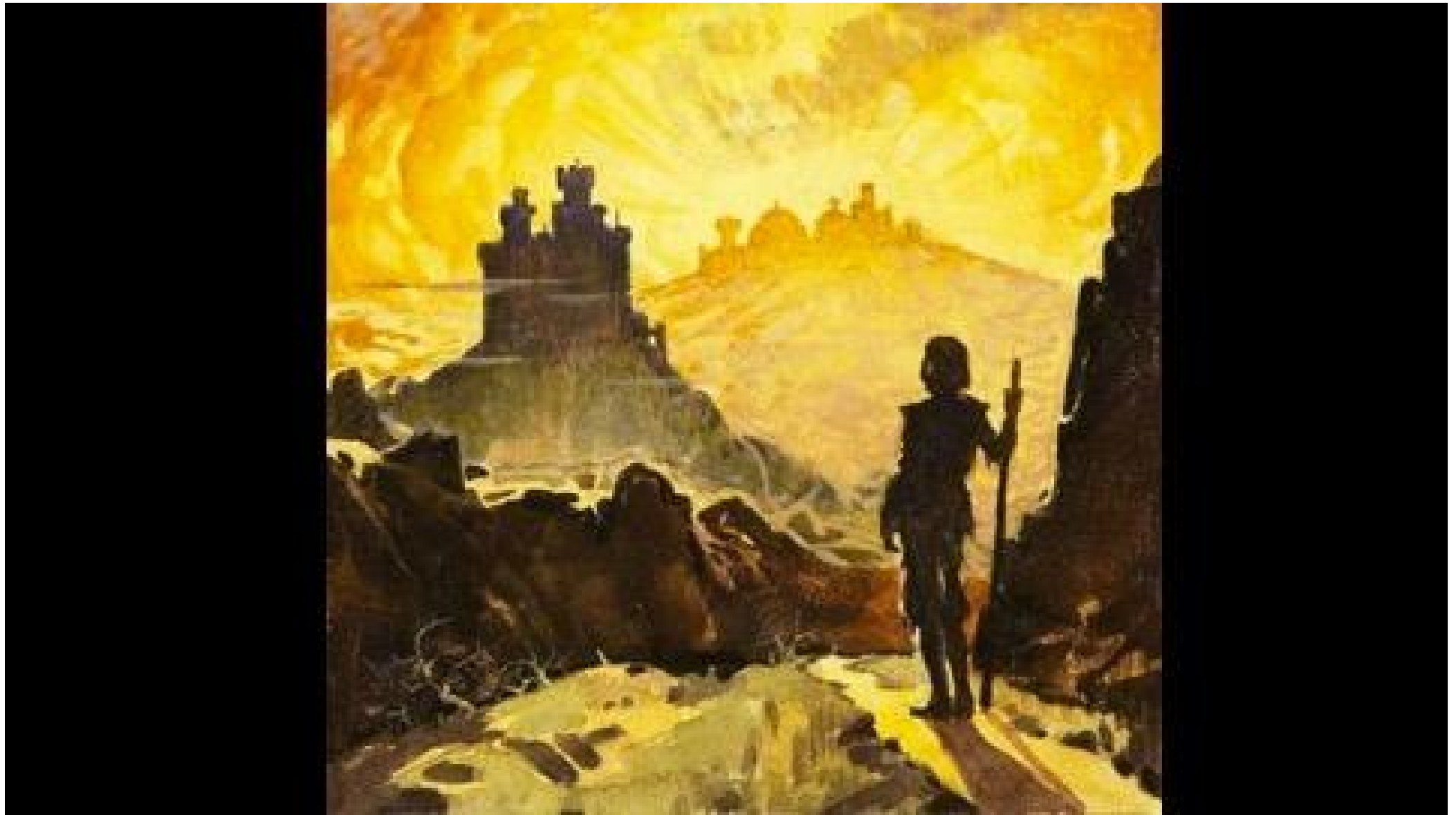
share in Christ,

IF INDEED WE HOLD OUR
ORIGINAL CONFIDENCE FIRM

TO THE END.

Hebrews 3:14





BROAD IS THE ROAD by Isaac Watts

Broad is the road that leads to death,
And thousands walk together there;
But wisdom shows a narrower path,
With here and there a traveler.

“Deny thyself, and take thy cross,”
Is the Redeemer’s great command...
The fearful soul that tires and faints,
And walks the ways of God no more,
Is but esteemed almost a saint,
And makes his own destruction sure.

Lord, let not all my hopes be vain
Create my heart entirely new;
Which hypocrites could ne’er attain,
Which false apostates never knew.

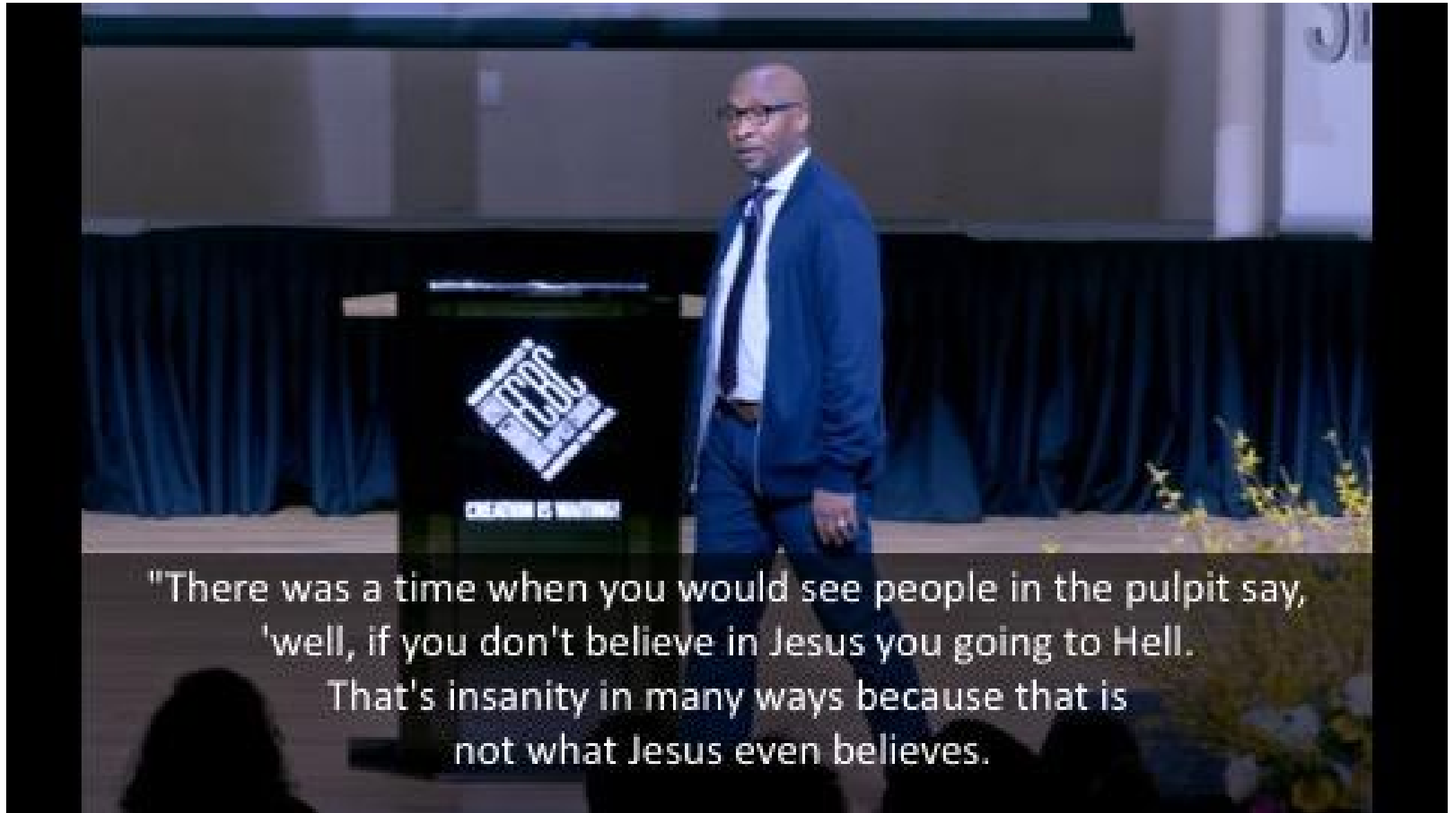








Michael A. Walrond Jr.
one of New York City's most influential pastors
(leads a 10,000-member First Corinthian Baptist Church in Harlem)



"There was a time when you would see people in the pulpit say, 'well, if you don't believe in Jesus you going to Hell. That's insanity in many ways because that is not what Jesus even believes."



“And so the key is you believe in God.
And whatever your path is to God I celebrate that.
Personally I celebrate that...”



“And so the key is you believe in God.
And whatever your path is to God I celebrate that.
Personally I celebrate that...”

Applause from the audience



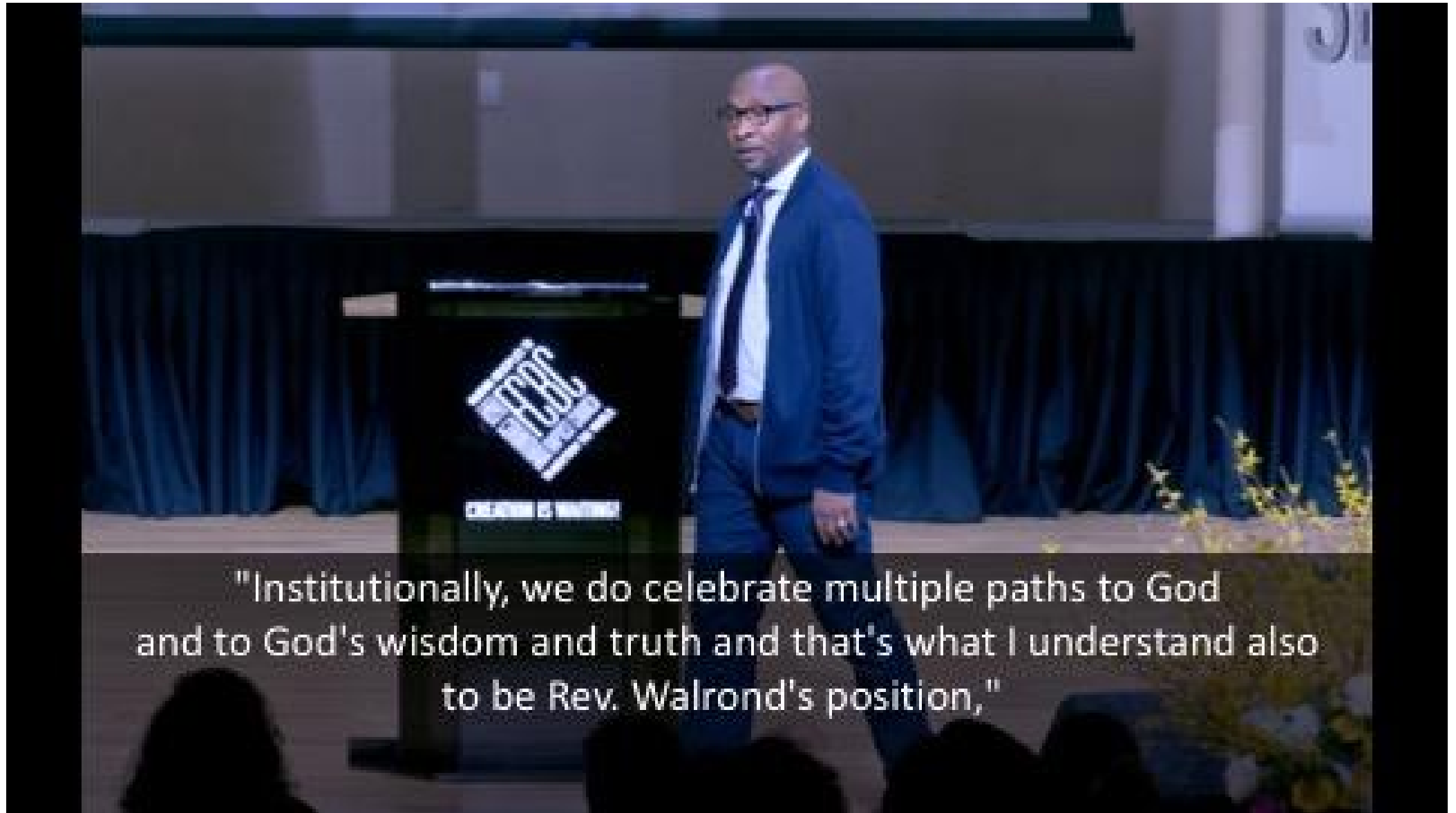
Walrond serves as a trustee and adjunct faculty member of Chicago Theological Seminary.



Ken Stone, academic dean at Chicago Theological Seminary, said



"Rev. Walrond's openness to the truth and wisdom found in multiple religious traditions and his celebration of multiple paths to God" is something the institution supports.



"Institutionally, we do celebrate multiple paths to God and to God's wisdom and truth and that's what I understand also to be Rev. Walrond's position,"



"Religious diversity is a hallmark of our school, we're very proud of it, we think that's the future for theological education. And we are very proud to be associated with Rev. Walrond."

Enter by the narrow gate. *For the gate is wide and the way is easy that leads to destruction, and those who enter by it are many.*

For the gate is narrow and the way is hard that leads to life, and those who find it are few. (Mat 7:13,14 ESV)



Enter by the Narrow Gate!



Leave the Way of Self-Righteousness



Learn of the Righteousness of Jesus



WAYS

Repent and Believe in Jesus Christ Alone

LIVE



Keep Believing Till The End



Enter by the narrow gate. **For the gate is wide and the way is easy that leads to destruction, and those who enter by it are many.**

For the gate is narrow and the way is hard that leads to life, and those who find it are few. (Mat 7:13,14 ESV)



The Question:

Is NOT, “where you want to be?”



The Question:

Is *NOT*, “where you want to be?”

But, “What road are you taking?”



The Law and the Prophets were
until John; since then the good news
of the kingdom of God is preached,
and **everyone forces his way into it.**
(Luk 16:16 ESV)



And someone said to him, “Lord,
will those who are saved be few?”
(Luk 13:23 ESV)



And someone said to him, “Lord, will those who are saved be few?”

And he said to them, “Strive to enter through the narrow door. For many, I tell you, will seek to enter and will not be able. (Luk 13:23,24 ESV)



Pilgrim's Progress



John Bunyan









