



15 May 2022

ALONE IN A BIG CHURCH

God delights when His people gather together in spiritual fellowship. Christian fellowship – deep and spiritual friendships with God’s people – is such an important part of the healthy Christian life. Whether single or married, Christians need encouragement and fellowship.

My wife Christine and I have had the privilege of being in our Care Group (CG) since 2014. In our CG, we’ve been encouraged by long-time and younger Christians. We’ve had CG members go through various trials (yes, literally we’ve had more than one of us almost die and come back to life) in all seasons of life, walking and praying for each other, as well as seeing God’s faithfulness displayed in their lives. As a CG, we have also had the opportunity to love and serve God together, sharpen each other, and grow together in Christ. When we are discouraged and down, the CG has also been a place of encouragement where Christians come around to be Christ’s arms and legs to offer love and support.

Is the fellowship full-orbed and mature? Not always, but we sincerely aim to grow deeper in true Christian fellowship and not just have an ‘orange juice’ or ‘coffee’ fellowship with each other where we only go skin deep on spiritual matters.

Is the CG perfect? No. After all, it’s made up of sinners saved by grace.

Relationships and deep Christian fellowship take effort and time but they are a precious blessing God has given to us. Let us not neglect true Christian fellowship, and go beyond superficialities. The CG is a great place to start to get plugged into Christian community, if you are looking to have fellowship with other Christians.

Sheep are vulnerable and can fall prey to the wolves when they are not with other sheep. We all need encouragement in our walk with the Lord. God remembers His people when we gather in Christian fellowship. Whether you find this in the CG and/or outside the CG, Christian fellowship is vital to a healthy Christian life. Let’s strive to develop deep and meaningful Christian friendships in our lives.

Shawn Vasoo
Care Group Leader

Find out more about a Care Group near you! Visit gospellight.sg > Connect > Care Groups

“ **Sheep are vulnerable and can fall prey to the wolves when they are not with other sheep. We all need encouragement in our walk with the Lord** ”



• VOLUNTEER WITH OUR CHILDREN'S MINISTRY

God's word is not limited by age! Even children can profess faith early in their growth! In a climate hostile to Christianity, our children can either be informed by the world or transformed by the Word. Find out more about our Children's ministry volunteer roles and how you can invest in the next generation.

Write into to: hannah.chee@gospellight.sg or Whatsapp/Call 9117 6000 for more information. Check out our ministry website at <https://bit.ly/3su1oiF>

• SERVE WITH OUR VIDEO TEAM

Our Video Ministry is instrumental in using technology to record and amplify God's word. Capturing every moment of the Sunday sermon and streaming to thousands. Be part of a team that's passionate about delivering the best video experience for God's glory. Whether you are tech-savvy or not, we have a place for you to learn and grow to serve the church body. Training is provided!

Please write in to shine@gospellight.sg or call 9117 6000 to indicate interest, for all of the above.

• TRANSPORT NEEDED (SPECIAL NEEDS)

Volunteers needed to ferry

(a) Visually handicapped brethren to and fro our 9am English service. She stays 2 to 3 bus stops away from church. Call Sue @ 97761377 for more info.

(b) Elderly lady in her 80s to and fro our 11am Chinese service. She stays at Jalan Kukoh. Call Hin Hee @ 92736368 for more info.

(c) Elderly lady in her 80s with her son and daughter (50s) to and fro our 11am Chinese service. She and her son are partially blind. They live in Toh Guan. Call Hin Hee @ 92736368 for more info.

(d) A lady in her 20s with Cerebral Palsy, on wheelchair to our 9am English service. She stays around Serangoon/Jalan Besar Area. Call Victor Lim @ 9488 8529 for more info.

• RECRUITMENT

1. Finance Executive

If you or anyone you know would be interested to serve with us for any of the above positions, please contact Benita Teo at benita.teo@gospellight.sg. Details of the job position are available via our website at <https://bit.ly/3yj3Hc2>.





• DONATION OF DEVICES FOR MISSIONS

Calling for donations of working/used phones and Ipad for our Iloilo team. We are working on scaling up through digitalization. Pastor Paul and the team from Singapore will be in the Philippines by end of June. Please call 9117 6000 if you would like to donate by **16 June**.

• SHUTTLE BUS SERVICE

Prior to Covid, we had Shuttle Bus services from Outram Park MRT station as well as Choa Chu Kang MRT station. If this shuttle bus service would benefit you, please indicate your interest via google form link

<https://bit.ly/3ss8zaN> or scan the QR code.



• YOUNG MUMS PRAY AND SHARE

Are you a young mum of a newborn or primary school children? Mothering is a high calling and not an easy one. We understand and hope to support you in your parenting journey. Join us twice a month on Zoom to connect, be encouraged and equipped to be the mum that God wants you to be!

Date: **Thu, 19 May** | Time: **9pm - 10pm**

Click Zoom link: <https://bit.ly/39TmGNQ>

Meeting ID: **865 7673 8143**

Password: **mums**

• COFFEE CONNECTS

Coffee Connects resume operations on May 15, 2022; 10:30am to 1:30pm at Mezzanine 1. Support our mission work through coffee and cake.

• CHIT CHAT! (NEWCOMERS EVENT)

Are you new to Gospel Light? Did you discover us through a friend, our online services or social media? We'd love for you to get to know us better! Chit Chat is an informal social session on Zoom where you get to mingle with our Pastor, Elders and leaders. Ever wondered what kind of church we are and where are our roots? What does our mission and vision statement mean? Save the date and we look forward to a great time of chit chat!

Date: **Sat, 21 May 2022** | Time: **11:00am**

Click Zoom link: <http://bit.ly/3oXHQij>

Meeting ID: 856 5201 9857

Password: **chitchat**

• CHILDREN'S SERVICE

For **15** and **22 May**, there are 2 options for Children's Service for Primary levels:

(i) **9am on-site**. Weekly registration will open on Sundays and close on the following Thursday. To register, click <https://bit.ly/3DisxJk>.

(ii) **11am on Zoom (No more online service from 5 June)**

Preschool will remain online at 10:15am until 22 May. To register, please write to children@gospellight.sg.

29 May - No children's service (Primary/Pre-school). Children are encouraged to attend the main service with their parents.

From 5 June onwards

1) Preschool Service for children aged 3-6 to start onsite at 11am. More details to follow via parents' emails

2) No more online zoom services for Primary (7-12 years) and Preschool (3-6 years). We will only be having on-site 11am services from 5 June onwards.

We are still looking for volunteers to join our Children's Ministry teams – do contact children@gospellight.sg for more info.

CLASSES & TRAININGS

• BAPTISM

Those who have believed in Jesus Christ as their Lord and Saviour are encouraged to be baptized.

Attendance at Baptism Class is a prerequisite.

Submission of written testimonies with completed application forms is a must. Register and download application forms via our website at

<https://bit.ly/3Ft6DEw> or scan the QR code.

Registration closes on Sun, 12 Jun.

*Registrants must be fully vaccinated.

Classes are conducted on-site.

Baptism Class (English)

Date: Sun, 10 Jul

Time: 12:45pm

Venue: Light 1 (L3)

Baptism Class (Chinese)

Date: Sun, 10 Jul

Time: 12:30pm

Venue: Hall 1 (L2)

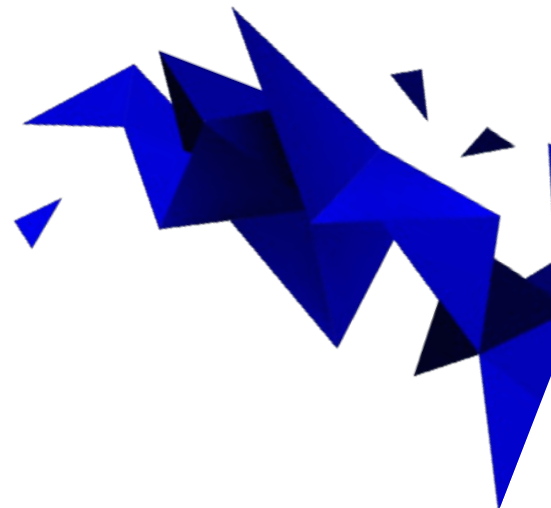
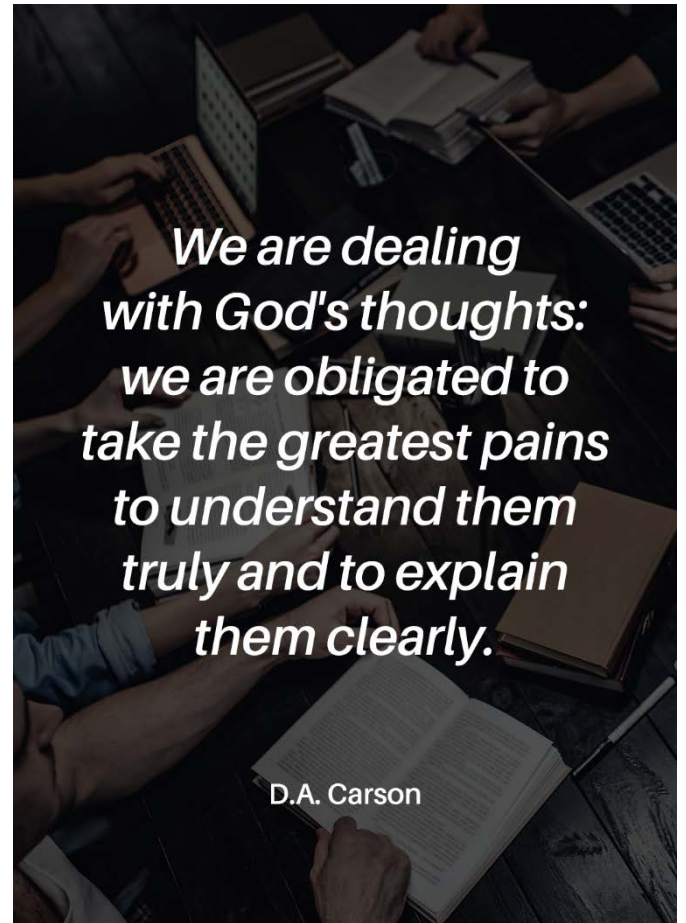
Baptism Date: 28 Aug 2022, Sunday

Venue: Shine Auditorium, Level 4



• EXPOSITORY BIBLE STUDY – BOOK OF ROMANS

We will be taking a break on Tues, 17 May and will resume on 24 May.



• WORSHIP SERVICE

- No need for online registration to attend worship services.
- Free seating, no zoning required.
- Congregational singing is permitted with masks on.
- On-site prayer meeting on Sundays at 8.15am in Shine Auditorium.
- Food will be served after the 9am worship service (simple breakfast) and after the 11am worship service (lunch).

(A) Worship Services for **Vaccinated Worshippers ONLY**

Congregational Service	Day and Time	Capacity for On-site	Livestream Link
English @ Shine Auditorium (L4)	Sunday at 9am and 11am	800 pax	http://bit.ly/38BU0rA (only available at 9am)

- Vaccinated individuals refer to those who have:
 - o Been fully vaccinated, i.e. has received the appropriate regimen of World Health Organisation Emergency Use Listing (WHO EUL) vaccines including their respective duration post-vaccination for the vaccine to be fully effective, and had their vaccination records ingested in MOH's national IT systems; or
 - o Recovered from COVID-19 within the last 180 days
- From 14 February 2022 onwards, persons aged 18 years and above who have completed the primary vaccination series of COVID-19 vaccines and are eligible for booster vaccination will be considered as fully vaccinated for 270 days after the last dose in their primary vaccination series. The same will apply to persons aged 12-17 years old from 14 March 2022. Persons who have recovered from COVID-19 and have completed their primary series vaccination do not require an additional booster dose at this point in time.
- Only vaccination records that are available via HealthHub app or TraceTogether app/token are accepted.
- We seek your understanding that worshippers who do not fulfil the above vaccination criteria will be turned away on-site.

(B) Worship Services for **Vaccinated and Unvaccinated Worshippers**

Congregational Service	Day and Time	Capacity for On-site	Livestream Link
Chinese @ Gospel Auditorium (L2)	Sunday at 9am and 11am	240 pax	http://bit.ly/2Ng0TXT (only available at 9am)
Filipino @ Gospel Auditorium L2	Sunday at 2pm	240 pax	http://bit.ly/30FjYFU
Youth @ Gospel Auditorium (L2)	Saturday at 4:30m	240 pax	https://bit.ly/2AaF8C3
Varsity @ Light 1 & 2 (L3)	Sunday at 2:30pm *no service on 5 th week	140 pax	Subscribe to Varsity announcement channel https://t.me/+WDu3myEwjpcxZWU1
Bahasa @ Hall 1 (L2)	Alternate Sunday at 10:30am	20 pax	<u>Nil</u>
Telugu @ Gospel Auditorium (L2)	Sunday at 5pm and 7pm	240 pax	http://bit.ly/30G4fXl

(B) Children Service

For details on Children's Service, please refer to page 3 of this bulletin.



WEEKLY MEETINGS

- **Meet Your Pastor! – Sunday 10:20am:** <https://bit.ly/2SMYSH4>
Meeting ID: 836 428 872 | Password: Pastor
- **Wednesday Prayer Meetings – 8pm:** <https://bit.ly/35HS8uy>
Meeting ID: 812 885 158 | Password: Wednesday
- **Sunday Prayer Meetings – 8:15am, Cry Room at Shine Auditorium (L4)**
- **Varsity Meetings**
 - **1-3rd Week: Freed to Follow (Exodus)**
 - **4th Week: Christian Suffering**
 - **5th Week: No meeting**

• If you are interested to receive our weekly prayer list, please email shine@gospellight.sg



GIVING ONLINE

You may give your offerings in the following ways:

1) PayNow

Under the UEN/Bill Reference No. section you can:

- State "NA" - Offering will go towards General Fund
- State Missions - To designate the offering

(a) Via "Scan and Pay"

- Open up your bank app and select "Scan and Pay"
- Scan the QR code below:



(b) PayNow UEN

You can also opt to key in the UEN:

S88SS0082AGF1

2) Internet Banking

- Add payee as Gospel Light Christian Church
- Account Number: **033-021695-5**
- Name of Beneficiary Bank: DBS Bank
- Under the Remarks section, you can leave it blank for the offering to go towards the General Fund or indicate Missions if you want to designate the offering.

3) Cheque

- Crossed cheque made payable to "Gospel Light Christian Church"
- On the reverse of the cheque, write **Gospel Light Christian Church** and the respective bank account numbers:
 - General Fund - **033-021695-5**
 - Missions Fund - **001-042653-2**
- Cheques can be deposited at any POSB or DBS bank into the church's accounts.

Gospel Light Christian Church | 39 Punggol Field Walk, Singapore 828753

T: +65 6386 6702 | M: +65 9117 6000

shine@gospellight.sg | www.gospellight.sg