



## REFLECTING ON THE WORTH OF A WOMAN

“**The woman, though not made equal to man in God’s purpose, is not made lesser, but is made worthy by her creator.**”

The story of the creation of woman (Genesis 2) shows the glorious intricacy of the Lord’s design. A loving God created the first woman, and after causing the first man to fall into a deep sleep, the Lord bequeathed her to him. How is this significant? You see, man was totally unaware of who this woman was and how she would be, but when left in the hands of a sovereign God, it became clear that He gave only the best to Adam.

Eve, meaning “the living one”, became the mother of life from then on.

The Hebrew for man is “ish” and woman “ishsha” because woman was “taken out of man” (Genesis 2:23). They were created not as competitors, but partners inextricably bound together in a sacred union, thereafter, becoming one flesh (Genesis 2:24).

The woman, lovingly brought forth by our Creator is made worthy. She is not lesser than man, though not equal in her role as is part of God’s intended purpose. Married or single, she is created equally to be God’s image bearer (Genesis 1:27) to reflect

the goodness of God and declare His wondrous grace (Roman 5:21).

The worth of a woman is inestimable as she is uniquely designed to complement man. This is her gifted role - to glorify God according to His will. She may be single or married and barren, but this does not diminish her place in God’s masterplan.

The way a woman lives out her “womanhood” is not limited, except when confined by man-made limitations. She is undeniably woven into God’s tapestry of love. It may be a small piece by comparison, yet she is undoubtedly a valuable piece through her many contributions. How so? By living out her calling in obedience to God; forbearing one another in love, with humility and patience by the Spirit, in the bond of peace (Ephesians 4:2-3).

May we, as women, glow in the beauty of being a helpmeet, with a surrendered heart that seeks to help and meet needs. May we shine brightly in this dark world and be a beacon of hope for those who are navigating the dimness of life.

Pamela Teh  
Biblical Counselling Ministry



## CLASSES & MINISTRIES

### •SERVE WITH US! (USHERING, MARSHALLS, BEFRIENDING & KITCHEN)

Perhaps you've heard the appeal for workers. But thought I'm not gifted in that area. I'm not called to serve in that area of ministry. Using "Calling" as a reason can be dangerous, if you place your perceived 'calling' above the need to love our neighbours and serve one another in the body of Christ. But when we serve outside of our comfort zones, it reveals our weaknesses in ways that will cause us to come before the Lord in desperate need of help, so that He gets the glory.

To volunteer or find out how you can be part of our Ushering, Marshalling, Befriending or Kitchen teams, email us at [shine@gospellight.sg](mailto:shine@gospellight.sg).

### •GLCC HUSBAND'S GROUP

As a Christian husband, do you know what is your role as leader of the household? How are you growing your family spiritually to go for the kingdom?

Come join the husband group gathering. Please WhatsApp Ken at 9783 0984 to find out more!

We meet every first Wednesday of the month.

Time: 7:30 pm

Venue: Hall 1, L2

### •SEEKERS CLASS

Have you been seeking after God and He feels far away? Have you wondered if God really cares about you? Don't all religions teach you to do good to get to heaven? Perhaps these questions and others have been bugging you. Why not discuss this in a group setting by enrolling in the Seekers class?

Start date: Sun, 7 Apr

Time: 12:00 pm

Course duration: 6 Sundays

Venue: Hall 3, Attic

Register at <https://bit.ly/3SZlihy>.

Registration closes on Sun, 24 Mar

### •MEMBERSHIP CLASSES

Membership in Gospel Light is only for baptized believers of the Lord, and must be of age 16 and above. Attendance at both membership classes 1 & 2 is a prerequisite for membership application. Classes will be conducted on-site.

#### English

Date: Sun, 28 Apr & 5 May

Time: 1:30pm – 2:30pm

Venue: Hall 2 (L2)

#### Chinese

Date: Sun, 28 Apr & 5 May

Time: 12:00pm – 1:00pm

Venue: Hall 2 (L2)

To register, please visit this link:

<https://bit.ly/MembershipClass>.

Registration closes on Sun, 31 Mar.



### • **HOPE: EXPLORE THE FAITH IN A 1-TO-1 STUDY**

Whether you're a seeker with doubts or a skeptic about Christianity, we're here to help! Exploring the faith may seem daunting, but we want to help you find hope in a world filled with brokenness and suffering.

Explore the truths of the bible in a 4-part 1-to-1 series with a personal facilitator, Join a series that has helped many come to understand the evidence for God better.

For more information, email: [sue.choo@gospellight.sg](mailto:sue.choo@gospellight.sg) or call 9776 1377.

### • **EXPOSITORY BIBLE STUDY – GOSPEL OF JOHN**

This Tuesday, 12 Mar, we will study John 6:41-59 and learn that Jesus is the bread of life. The Zoom dial-in details for our session are as follows:

Date: Tue, 12 Mar

Time: 8:00pm

Join Zoom Meeting

<https://bit.ly/3pd7C7T>

Meeting ID: 851 8603 0760

Passcode: 211761

### • **SILVERJOY (SENIORS) MINISTRY**

Every chapter of life is a gift from God. And our ministry for seniors celebrates that gift. SilverJoy isn't just a place for seniors to gather, it's a spiritual community of friendship and support.

Invite your pre-believing friends, neighbours or family members.

Date: 1<sup>st</sup> & 3<sup>rd</sup> Wed of the month

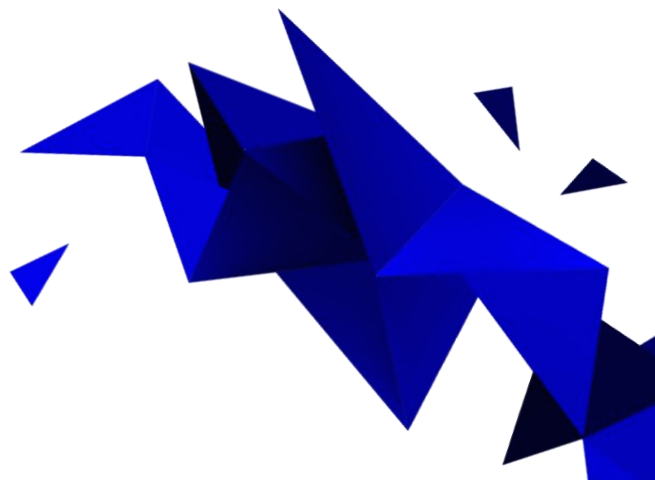
Time: 9:45am - 12:30pm

Venue: Connections Corner (L1)

### **Upcoming events coming your way. Join us!**

Contact CE at 9753 7964 for enquiries

Date	Programme	Activity
20/3/2024	Fun Times	Games







# CHURCH HAPPENINGS

## • INTERSHIP

Wonder if full-time ministry is what you have been called to? Come explore under Gospel Light's Internship programme, especially tailored for those who are keen in shepherding/pastoral work. To find out more details on the application criteria, please visit our website at [Internship](#).

## • GOOD FRIDAY 2024

Date: Fri, 29 Mar

Time: 9:00am and 11:00am

English Service: Shine Auditorium (L4)

Chinese Service: Gospel Auditorium (L2)

Children's Service: Light Auditorium (L3) & Attic Level

*Booking for Children's Service will open on Fri, 15 Mar at 9:00am.*

## • ANNUAL CONGREGATION MEETING (ACM)

Our Annual Congregation Meeting will take place on

Date: Sat, 23 Mar

Venue: Gospel Auditorium (L2)

Time: 10:00am to 12:00pm, with breakfast from

9:00am onwards at L2 foyer

\*For Members and Associate Members only.

## • JOB RECRUITMENT

Do you have a heart for missions and for connecting Christians who have a heartbeat to reach the lost? If so, join us to further the kingdom of God.

1. Connections Executive (Missions)

For more details of the job position, please visit our website at [Careers](#) or email Benita Teo at [benita.teo@gospellight.sg](mailto:benita.teo@gospellight.sg).

## • CHURCH CAMP 2024 – DAY-TRIPPER

Due to overwhelming response, we have managed to get 50 day-tripper slots from the hotel. These day-tripper slots do not include accommodation, transport or meals. If interested, please write to [shine@gospellight.sg](mailto:shine@gospellight.sg) to enquire about day tripper rates (inclusive of hotel charges).



# WORSHIP SERVICE

- **Wednesday Prayer Meetings – 8pm**

Venue: Hall 3, Attic

- **Sunday Prayer Meetings – 7:45am**

Venue: Cry Room at Shine Auditorium (L4)

If you are interested to receive our weekly prayer list, please email [shine@gospellight.sg](mailto:shine@gospellight.sg)

## (A)Worship Services

Congregational Service	Day and Time	Livestream Link
English @ Shine Auditorium (L4)	Sunday at 8:30am, 10:15am and 12:00pm	<a href="https://bit.ly/3SH45uZ">https://bit.ly/3SH45uZ</a> (only available at 10:15am)
Chinese @ Gospel Auditorium (L2)	Sunday at 8:30am and 10:15am	<a href="http://bit.ly/2Ng0TXT">http://bit.ly/2Ng0TXT</a> (only available at 10:15am)
Filipino @ Gospel Auditorium (L2)	Sunday at 2pm	<a href="http://bit.ly/30FjYFU">http://bit.ly/30FjYFU</a>
Youth @ Gospel Auditorium (L2)	Saturday at 4:30m No service on 4 <sup>th</sup> & 5 <sup>th</sup> week	Subscribe to Youth announcement channel <a href="https://t.me/+Yd524QzAjKk2Yzll">https://t.me/+Yd524QzAjKk2Yzll</a>
Varsity @ Light 1 & 2 (L3)	Sunday at 2:30pm	Subscribe to Varsity announcement channel <a href="https://t.me/+WDu3myEwjpcxZWU1">https://t.me/+WDu3myEwjpcxZWU1</a>
Bahasa @ Reception Room (L1)	Alternate Sunday at 10:30am	For more information about our services contact 9628 5061/ 9117 6000
Telugu @ Gospel Auditorium (L2)	Sunday at 5pm and 7:30pm	<a href="http://bit.ly/30G4fXI">http://bit.ly/30G4fXI</a>

## (B) Children Service

Children's services are at **8:30am and 10:15am**:

- (i) Playgroup (12 months - 35 months): Hall 3 at Attic Level
- (ii) Preschool (36 months - 6 years): Eshkol Valley premise at Attic Level
- (iii) Primary (Primary 1 to Primary 6): Light Auditorium at Level 3

## BOOKING FOR PRESCHOOL/ PRIMARY SERVICES

Bookings opens on Wed, 8:30am for 1<sup>st</sup> service and Wed, 10:15am for 2<sup>nd</sup> Service

- Follow this link to complete your booking: [bit.ly/cmbooking](https://bit.ly/cmbooking)
- Bookings will be valid till the respective service start time, thereafter they will be released for walk-ins.
- Children with no bookings are welcome to walk-in but subject to available capacity

A step-by-step guide and FAQ can be found at [bit.ly/cmbookingfaq](https://bit.ly/cmbookingfaq). For assistance email us at [children@gospellight.sg](mailto:children@gospellight.sg).



You may give your offerings in the following ways:

## 1) PayNow

Under the UEN/Bill Reference No. section you can:

- State "NA" - Offering will go towards General Fund
- State Missions - To designate the offering

## (a) Via "Scan and Pay"

- Open up your bank app and select "Scan and Pay"
- Scan the QR code below:



## (b) PayNow UEN

You can also opt to key in the UEN:

**S88SS0082AGF1**

## 2) Internet Banking

- Add payee as Gospel Light Christian Church
- Account Number: **033-021695-5**
- Name of Beneficiary Bank: DBS Bank
- Under the Remarks section, you can leave it blank for the offering to go towards the General Fund or indicate Missions if you want to designate the offering.

## 3) Cheque

- Crossed cheque made payable to "Gospel Light Christian Church"
- On the reverse of the cheque, write **Gospel Light Christian Church** and the respective bank account numbers:
  - General Fund - **033-021695-5**
  - Missions Fund - **001-042653-2**
- Cheques can be deposited at any POSB or DBS bank into the church's accounts.

Gospel Light Christian Church | 39 Punggol Field Walk, Singapore 828753

T: +65 6386 6702 | M: +65 9117 6000

[shine@gospellight.sg](mailto:shine@gospellight.sg) | [www.gospellight.sg](http://www.gospellight.sg)