



WEEKLY BULLETIN

GOSPELLIGHT.SG

18 JANUARY 2026

Leading generations

INTO A LIFE-CHANGING
RELATIONSHIP WITH JESUS CHRIST.





THE QUIET COMMAND OF COMPASSION

Article by Melanie Lim

It's a hug I'll never forget.

Two years ago, when my cancer recurred, one of my best friends came over.

She didn't arrive with food in hand or a stoic smile. She didn't try to "fix" my fears by rationalising what was happening. Instead, she walked through my door, pulled me into her arms, and wept. We cried, our tears mingling, her grief intertwined with mine.

In that moment, this beloved sister embodied one of Scripture's quietest - and sometimes most uncomfortable - commands: *"Weep with those who weep"* (Romans 12:15).

**"Because love doesn't stand
dispassionately at the doorstep of
suffering - it steps inside."**

The Call to Comfort

Paul's command illustrates the call to biblical comfort. The New Testament word for comfort – *parakaleo* - means "called alongside." Not to shout encouragement from a safe distance, or to drag someone forward when they can barely stand.

Scripture calls us to walk alongside our brethren - meeting them where they are, not where we think they should be. Walking the valley together, our hand in theirs.

This isn't always about tears. Sometimes, it's the heavy silence Job and his friends shared for many days. It's a posture of the heart - allowing another's sorrow to resonate within us as if it were our own.

We see this in Scripture's shortest verse: "*Jesus wept*" (John 11:35). Jesus stood at Lazarus's tomb, fully intending to raise him. Yet He wept. Why? Because His beloved friends were broken. Because love doesn't stand dispassionately at the doorstep of suffering - it steps inside.

This same love, poured into our hearts through the Spirit, moves us to share in our brethren's pain.

The Purpose of Comfort

Love means showing up, even when we feel awkward or inadequate. It means staying longer than is convenient. It's remembering their loss and pain when the world has moved on.

This is what identifies us as the body of Christ - God's family, who will not leave a brother or sister to weep alone. Paul's command isn't just about solidarity. It is spiritual warfare.

When suffering and grief isolate us from the world, Satan whispers his deadliest lies: *You're all alone. God has abandoned you. Nobody cares.* When we weep with a brother or sister, we shatter these lies - not with words or deep theology, but with the undeniable warmth of our presence in the darkness.

This goes beyond the initial crisis - into the third month, the first anniversary, the random Tuesday when wounds reopen. Our faithful presence in the long ache declares the truth Satan wants to bury: *You are not forgotten.*

The Source of Comfort

Our tears do more than break isolation. They become channels for something greater.

Our Father is “*the God of all comfort*,” who comforts us in our afflictions so that we can, in turn, comfort others with the comfort He gives us (2 Corinthians 1:3–4). When our tears connect us to another’s pain, we can share what God showed us in our own darkness: His faithfulness when we felt forgotten. His nearness when we felt abandoned. His strength when we had none.

We are not the source. We are the conduit.

When my friend wept with me that day, she didn’t explain my cancer. She didn’t promise healing. Instead, she did something far more profound - in the depths of my pain, she reminded me of the Father who was there with me. The same Father who had been with her before, in hers.

Amid her tears, she whispered, “*He’s still faithful. Even in this.*” Until God wipes every tear from our eyes, this is our calling: to walk the valley together, carrying His comfort with us.

That’s the power of our tears.

Melanie leads a women’s discipleship group. She is also part of the Women’s Ministry core team.





B I B L E
R E A D I N G
P R O G R A M



B I B L E R E A D I N G P R O G R A M

WHETHER YOU ARE NEW TO
THE BIBLE OR HAVE READ
IT FOR YEARS, GOD STILL
HAS MORE TO SHOW YOU.

In just 4 weeks –1 hour each
session – you'll learn, through
hands-on practice in Jude, how
to see the true aim of each
passage.

Read beyond what “jumps out,”
understand the author's intent,
and grow in faithful, life-shaping
application.

"Save your seat! Register [today!](#)

EXPLORE THE FAITH

A man is sitting on a low wall or bench in a dark room, reading an open book. A bright, golden beam of light originates from a sunburst or starburst in the upper right portion of the frame, shining down onto the man and his book. The light creates a strong contrast with the dark surroundings, highlighting the man's silhouette and the pages of the book. The overall atmosphere is contemplative and spiritual.

CALLING ALL:
SKEPTICS
SEEKERS
PRE-BELIEVERS

EXPLORE

THE FAITH

Curious about Christianity? Or walking with a friend who has questions? Explore the Faith is a 4-part, 1-to-1 Bible study designed for skeptics, seekers, and pre-believers – and for Christians who want to journey thoughtfully with them.

Together with a mentor, explore the Gospel of John, examine key claims and evidence for the Bible and God, and ask honest questions in a safe, personal setting.

REGISTER TODAY:
WHATSAPP 9776 1377



CHURCH HAPPENINGS

CNY REUNION OUTREACH

Invite family, friends, colleagues, neighbors to join us for our biennial CNY Reunion Outreach.

Celebrate CNY through Lo Hei (Christian version), watch performances, witness a living room interview, sing CNY songs, play games plus dinner fellowship with your guests.



Date: Sat, 28 Feb



Time: 5.30pm – 8.30pm



Venue: Foyer (L1)



To register, click [here](#).

Registration closes Sun, 15 Feb.


**Limited capacity*




Life Together


CHURCH CAMP 2026

Come spend time with the family of God from 10 – 13 June 2026 at Parkroyal A’Famosa Melaka Resort. 🏕️

 10 – 13 Jun 2026

 Parkroyal A’Famosa Melaka Resort

 Theme: “Life Together”

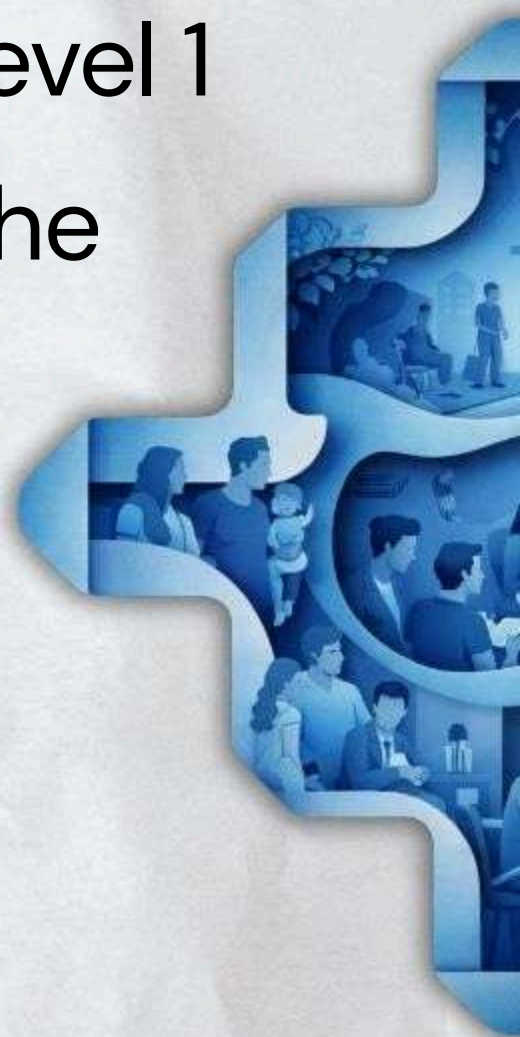
 To register, click [here](#).

Early bird 1 Jan – 31 Jan

Normal registration 1 Feb – 28 Feb

From this Sunday onwards, there will be no Church Camp booth at the Level 1 foyer. Assistance is available at the Church Office (L5) on Sundays, 10.00am – 2.00pm.

For more information, please refer to the FAQ [here](#).



CHURCH HAPPENINGS

CHURCH COMMITTEES AND SUB-COMMITTEES

In preparation ahead of the church ACM (28 March 2026), it is now the time to begin our nomination process for potential Church Committee leaders for 2026.

We are looking for **godly**, faithful and qualified candidates with the following professional experience:

- a. Finance (Accountancy / Treasury)
- b. Governance (Risk Management / Audit / Compliance)
- c. Human Resources (HR Operations / Talent Management / Learning & Development)
- d. Building and Security (Building Operations and Maintenance/ Mechanical and Electrical/ Fire Safety/ IT/ Logistics)

Continue next page

CHURCH HAPPENINGS

- e. IT (Infrastructure/ Cybersecurity/ Governance)
- f. Land Lease Renewal (Property Valuation)
- g. Internal Auditors (Internal Control/ Accountancy/ Regulatory Knowledge)

☞ Click [here](#) for more details on the requirements to serve.


☞ Gospeliters may submit their own names or recommended names to shine@gospellight.sg by **1 Feb 2026** and state the position that the individual is recommended for.

ANNUAL CONGREGATION MEETING (ACM)

Our Annual Congregation Meeting will take place on

 Date: Sat, 28 Mar

 Venue: Shine Auditorium (L4)

 Time: 10.00am - 12.00pm, with breakfast from 9.00am onwards at L1 foyer

**For Members and Associate Members only.*

CLASSES + MINISTRIES

FOUNDATIONS OF FAITH CLASS

A strong foundation is crucial for any building or structure. The same goes for our spiritual life. However, not many of us have the privilege of receiving proper grounding in the faith.

The Foundations of Faith class aims to ground you in the essentials of the faith as well as inculcate the spiritual disciplines of bible reading, prayer and devotional time with God so that you will be rooted and built up in the faith.

This class is open to new believers as well as those who need grounding in the faith.

Sundays - Commencement date: Sun, 1 Mar

Course duration: 13 weeks

 Time: 2.00pm - 4.00pm

 Venue: Attic Level, Eshkol Valley rooms

 Click [here](#) to register.

Registration closes Sun, 15 Feb.

Continue next page

CLASSES + MINISTRIES

**Wednesdays (for Homemakers) -
Commencement date: Sun, 5 Mar**

Course duration: 13 weeks

 Time: 10.00am - 12.00pm

 Venue: Zoom meeting

 Click [here](#) to register.

Registration closes Sun, 15 Feb.

CLASSES + MINISTRIES

SEEKERS CLASS

Are you seeking for peace and direction in life? Does God exist and does He really care about me? Is Christianity just another religion? How can Jesus help me?

Perhaps these are some of the questions that have been bugging you. Why not enrol in the Seekers class and find answers to these and other questions concerning Christianity?

Commencement date: Sun, 1 Mar

 Time: 2.00pm - 4.00pm

Course duration: 6 Sundays

 Venue: Attic Level, Eshkol Valley rooms


 Click [here](#) to register

Registration closes Sun, 15 Feb.

CLASSES + MINISTRIES

SILVER JOY (SENIORS) MINISTRY

Every chapter of life is a gift from God. And our ministry for seniors celebrates that gift. Silver Joy isn't just a place for seniors to gather, it's a spiritual community of friendship and support. Invite your pre-believing friends, neighbours or family members.

 Date: Weds, excluding the 5th Wed of the month

 Time: Refer to the table below

 Venue: Gospel Light Christian Church
Upcoming events coming your way.


Date	Programme
21 Jan	CNY Craft (9.30am - 12.00pm) *Registration required
28 Jan	Rummikub Game (9.00am - 12.00pm)


 Contact **9753 7964** for enquiries.

CLASSES + MINISTRIES

EXPOSITORY BIBLE STUDY – GOSPEL OF LUKE

This Tue, 20 Jan, we will study Luke 6:1-11, where we will study about Jesus being the Lord of the Sabbath and a man with a withered hand. The Zoom dial-in details for our session are as follows:

 Date: Tue, 20 Jan

 Time: 8.00pm

 Join [Zoom Meeting](#)

Meeting ID: 851 8603 0760

Passcode: 211761

Prayer



Meetings

“Let us then with confidence draw near to the throne of grace, that we may receive mercy and find grace to help in time of need.”

Heb. 4:16



Wednesday

8PM | HALL 3 (ATTIC LEVEL)



Sunday

**7.45AM | CRY ROOM
SHINE AUDITORIUM
LEVEL 4**



Prayer List

**WE CAN ONLY MOVE FORWARD
AS A CHURCH BY PRAYER.**

**[SUBSCRIBE](#) TO OUR WEEKLY
PRAYER LIST**



Bereavement

**WE MOURN WITH MEMBERS
WHO'VE LOST LOVED ONES.
(ROM. 12:15) STAY [UPDATED](#)
ON CHURCH BEREAVEMENT
NOTICES.**



WORSHIP SERVICES

English @Shine Auditorium (L4)

Sunday at 8.30am, 10.15am, 12.00pm

[Watch](#) our livestream service at 10.15am only

Chinese @Gospel Auditorium (L2)

Sunday at 8.30am and 10.15am

[Watch](#) our livestream service at 10.15am only

Filipino @Gospel Auditorium (L2)

Sunday at 2.00pm

[Watch](#) our livestream service at 2.00pm

Youth @Gospel Auditorium (L2)

Saturday at 4.30pm

Subscribe to our announcement channel on

[WhatsApp](#) or [Telegram](#).



WORSHIP SERVICES

Varsity @Light 1 and Light 2 (L3)

Sunday at 2.30pm *no service on 5th week
of the month

[Subscribe](#) to Varsity announcement channel

Bahasa @Hall 1 (L2)

Every alternate Sunday 10.30am

For more info, please contact

9117 6000 / 9628 5061

Telugu @Gospel Auditorium (L2)

Sunday at 5.00pm and 7.30pm

[Watch](#) our livestream service at 5.30pm



CHILDREN'S SERVICES

PLAYGROUP

(12 - 35 months)

@ Hall 3 (Attic)

Sunday at 8.30am and 10.15am

PRESCHOOL

(36 months - 6 years)

@ Eshkol Valley Premises (Attic)

Sunday at 8.30am, 10.15am and 12.00pm

PRIMARY

(Primary 1 - 6)

@ Light Auditorium (L3)

Sunday at 8.30am, 10.15am, **12.00pm***

**12.00pm service held at Eshkol Valley Premises (Attic)*

Join our [Whatsapp community](#)
for regular updates

[Contact us](#) if you're interested to explore
serving in Children's Ministry!

Giving Online

FULL GIVING DETAILS [HERE](#)



> PAYNOW

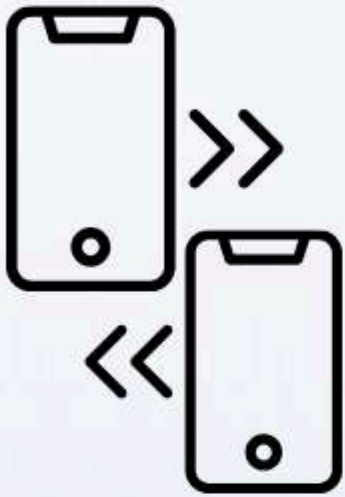
**Unique Entity Number (UEN)
S88SS0082AGF1**



**Scan
With
Your
Bank
App**

All offerings will be directed to the “General” fund. State “Missions” in the UEN/Bill Reference No. section if you wish to designate the offering to our mission work.

Giving Online



**> Internet Banking Transfer
DBS Bank
033-021695-5**



**> Cheque
Make Payable to:
“Gospel Light Christian Church”
Write “Offerings” behind.**

For internet banking transfer,
indicate “General” or “Mission” to
designate where the offering goes to

For cheques, you can further
indicate on the reverse: “General
Fund” 033-021695-5 or “Missions
Fund” 001-042653-2.

Cheques can be deposited at any
POSB or DBS bank into the church’s
accounts.